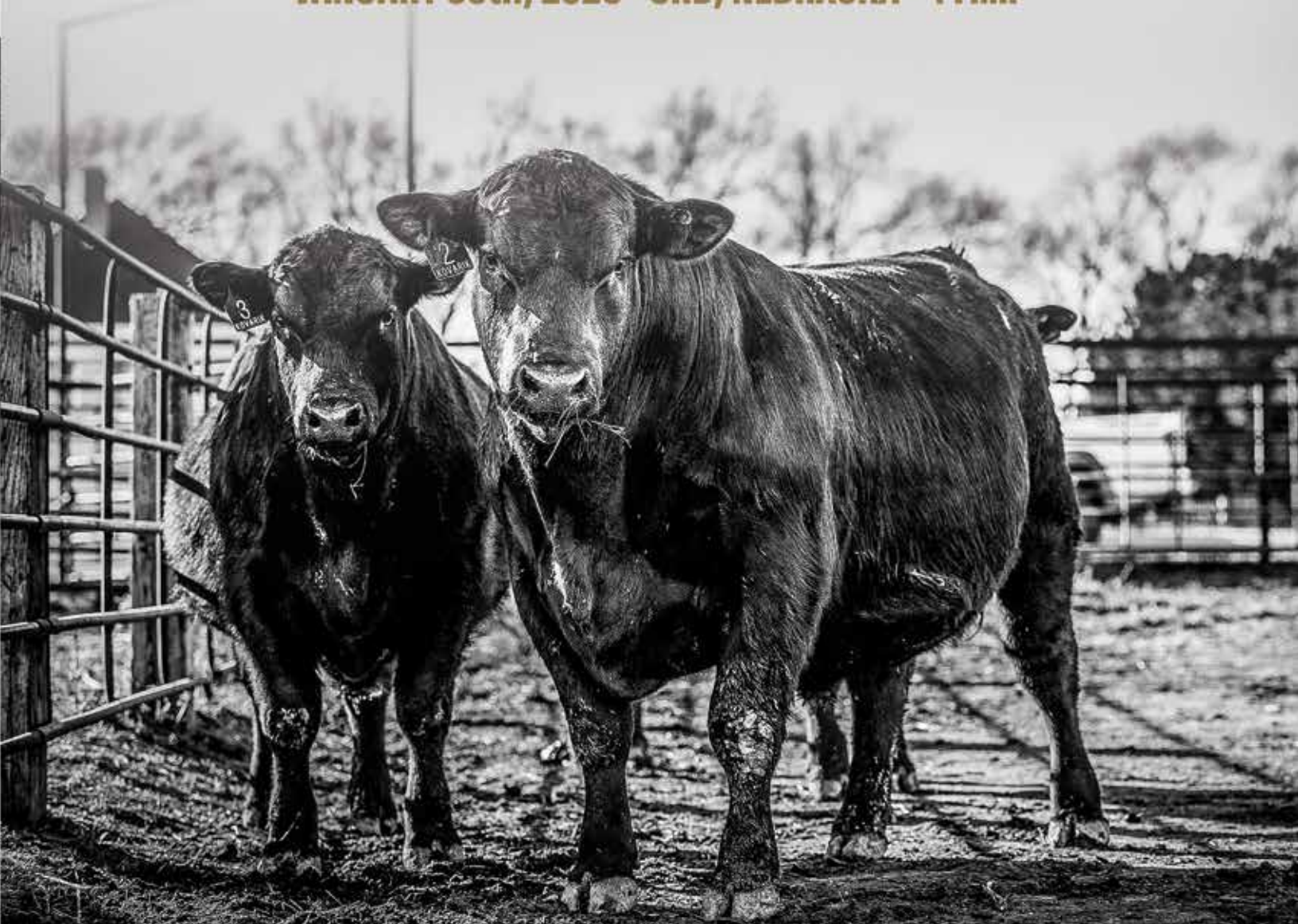




BULL SALE

JANUARY 30th, 2026 - ORD, NEBRASKA - 4 P.M.



KOVARIK

— CATTLE CO. —

BULL SALE

JANUARY 30th, 2026 - ORD, NEBRASKA - 4 P.M.

SALE LOCATION

KOVARIK CATTLE CO.

81624 Haskell Creek Ave.
Ord, Ne 68862

SALE DAY CONTACTS

Luke Kovarik: 308-750-6154
Mitchell Glause, *Seedstock Manager*: 402-720-3164
Colt Keffer, *CK Sales & Marketing*: 765-376-8784

AUCTIONEER

Cody Lowderman: 309-313-2171

LIVESTOCK PRESS

Will Harsh, *American Angus Association*: 740-272-1386
Austin Brandt, *Lee-Agri Media*: 712-621-1829
Ty Groshans, *Western Livestock Journal*: 970-818-6016

SALE MANAGEMENT

CK SALES & MARKETING

Colt Keffer - 765-376-8784
colt@cksalesandmarketing.com



GUARANTEE

All bulls sell fully guaranteed through their first breeding season. If you have any trouble with your purchases, please contact Luke directly.

DELIVERY

Free delivery within 500 miles, contact Luke if outside that radius.

HERD HEALTH

Health of the bulls is guaranteed to be in order.
Aged bulls will have passed a breeding soundness exam.
Yearling bulls will be tested before delivery or pick up.

EPDs are current as of 12/5/25

Sale day refreshments will be provided. We invite you to stay after the sale for fellowship as a thank you from us at Kovarik Cattle Co.

ONLINE BIDDING

DVAuction
Broadcasting Real-Time Auctions



Welcome!

Thank you for your interest in Kovarik Cattle Company and welcome to our ranch.

As we head into 2026, the cattle industry is enjoying record calf prices, with replacement females in many cases exceeding steer values. This market environment continues to reinforce something we have always believed—**maternal function matters**. The demand for productive, long-lasting cows has never been stronger, and building cattle that thrive in a maternal-driven system remains the foundation of our program.

Kovarik Cattle Company is a registered Angus operation focused on producing bulls designed for commercial cow-calf profitability. We utilize modern genetics rooted in time-tested pedigrees to deliver cattle that balance **performance with maternal strength**. Our cows are expected to raise a heavy, marketable calf without sacrificing fertility, longevity, or efficiency. Whether you retain your own heifers or market replacement females, our genetics are selected to add lasting value to your herd.

Bull development is a critical part of that equation. Our older bulls are developed with longevity and real-world function in mind. **They are grown on grass, backgrounded through the winter, grazed again the following summer, and then brought into our development pens on October 1 for the final 120 days leading up to the sale.** This approach allows bulls to express their genetic potential while maintaining soundness, durability, and working condition.

This year, we are offering **75 age advantaged and yearling bulls** at our third annual live auction on the ranch, Friday, January 30th. We are grateful for the positive feedback from past customers and are excited to welcome both new and returning industry friends to the ranch for the 2026 sale.

Ranch tours will be available throughout the week of the sale. If you would like to visit, please contact Luke by phone or email. We look forward to meeting you and showing you, our cattle.

With gratitude,

Luke & Natalie Kovarik



It is a privilege to once again assist the Kovarik family with their annual production sale. This year will be the 3rd annual sale, and I firmly believe that this is the deepest and highest quality offering we have ever assembled. Luke and Natalie have been building to this sale, both in terms of number of head, and quality of product. And I believe they have done an exceptional job of keeping quality in check, while increasing numbers.

If you are a producer, who has marketed your calf crop already, you have most likely done so in the highest cattle market of your life. Everyone is expecting this bull sale season to break records, and for the purebred producers, I hope that is true. With that in mind, it has never been more important to invest in a quality product that is backed by great people. Both of those are found at Kovarik Cattle Co. Luke and I had a conversation not long ago about what to expect from the sale this year. His main concern was making sure the product he sold to the commercial cattleman and cattlegirl met their expectations and could help them return profit.

Luke has bred these bulls to not only help you return profit when you market their progeny, but he also wants the females produced by these bulls to be low maintenance, highly efficient cows that stay in the herd. It would be easy to breed for the highest performance animal possible, however, Luke pays attention to the details that will help keep you in business for the long haul, not just capitalize on current market conditions.

If you have never done business with the Kovarik family, I encourage you to attend the sale and talk to the repeat customers. It will be hard to find a more grounded, hardworking, genuine family to do business with.

If the family, sale team or I can be of assistance ahead of the sale, please do not hesitate to reach out.

See you on sale day,

Colt Keffer

CK Sales & Marketing, LLC.



Lot 1



E&B WILDCAT, Sire



Maternal Brother to the Dam of Lot 1

Lot 1

KOVARIK COUGAR 4110

BD. 08/08/24 AAA. 21334008 TATTOO. 4110

<p>GAR DISCOVERY 6737H E & B WILDCAT 9402 E&B LADY PLUS 643</p> <p>ANGUS</p> <p>MARCYS MADISON 67-8 KOVARIK BLACKCAP BESSIE 036 KOVARIK BLACKCAP BESSIE 821</p>	<p>V A R DISCOVERY 2240 G A R INGENUITY 3132 CONNEALY CONFIDENCE PLUS E&B LADY CREDDENCE 190</p> <p>MARCYS SCALE CRUSHER MARCYS 13 ETHELDA E 50-3 MCCONNELL ALTITUDE 3114 LT BLACKCAP BESSIE 0141</p>	<p>ACT. BW 86 (ET)</p> <p>WW RATIO ET</p> <p>YW RATIO ET</p> <p>SCROTAL 37</p>
--	---	--

CE	BW	WW	YW	MILK	MARB	REA
11	0.7	75	132	24	0.83	0.74

\$M	\$W	\$B	SC
94	77	161	303
10%	25%		25%

The lead bull in this year's edition of the sale is sired by the very popular E&B Wildcat out of a female that stems back to the LT Blackcap Bessie 0141, the foundation cow for Kovarik. Lot 1 is very balanced, both on paper and in terms of phenotype. He offers double digit calving ease with top one-third growth traits, and top 30% DOC, 10% CLAW, 35% ANGLE. He is a long spined, deep sided, big outlined individual with a look of quality. This is a herd sire prospect that checks the boxes.



Lot 2



SITZ MANOR 3195, Dam



KOVARIK CHIEF 315, Full Brother to Lot 2

Kovarik Crown 4146 is a bull we wanted to feature in this year's sale. He is an exceptional son of Chiefton out of the Sitz Manor 3195 donor. A full brother to this bull, Kovarik Chief 315, was selected as the high seller in the 2025 sale by Raven Angus, Colome, SD. Lot 2 offers breed leading growth and management traits, alongside an impressive phenotypic presence. Note this bulls top 15% HP and 5% \$M.

Lot 2 **KOVARIK CROWN 4146**
 BD. 08/14/24 AAA. 21309503 TATTOO. 4146

KOUPALS B&B PATHFINDER 8106
LT CHIEFTON 1440
 LT FOREVER LADY 7038
 ANGUS
 SITZ RAINMAKER 11127
SITZ MANOR 3195
 SITZ MANOR 3462

LT ENTERPRISE 5213
 B&B BLKBD PROGRESS 3015
 S FOUNDATION 514
 LT FOREVER LADY 5360

SITZ RAINMAKER 8075
 SITZ EMMA E 417L
 SITZ UPWARD 307R
 SITZ MANOR 1924

ACT. BW **93 (ET)**
 WW RATIO **ET**
 YW RATIO **ET**
 SCROTAL **39**

CE	BW	WW	YW	MILK	MARB	REA
6	2.6	82	143	28	0.75	0.56
		20%	20%			
\$M	\$W	\$B	\$C			
95	81	164	308			
5%	20%		20%			

Lot 3



Lot 3
KOVARIK CAPTAIN 4153
 BD. 08/16/24 AAA. 21294577 TATTOO. 4153

KOUPALS B&B PATHFINDER 8106
LT CHIEFTON 1440
 LT FOREVER LADY 7038
 LT CONVERSE 8011
KOVARIK BLACKCAP 018
 KOVARIK AMANDA 851

LT ENTERPRISE 5213
 B&B BLK&D PROGRESS 3015
 S FOUNDATION 514
 LT FOREVER LADY 5360

CONNEALY CONFIDENCE PLUS
 LT NORDICA 6066
 IRON MTN BOULDER DAM C021
 IRON MTN AMANDA B150

ACT. BW	96 (ET)
WW RATIO	ET
YW RATIO	ET
SCROTAL	39

CE	BW	WW	YW	MILK	MARB	REA
6	2.7	85	154	27	0.69	1.1
		15%	10%			15%
\$M	\$W	\$B	\$C			
105	84	159	311			
2%	15%		20%			



KOVARIK BLACKCAP 018, Dam of Lots 3, 4 & 5

Lot 3 is the lead bull in a trio of flush brothers. A Chiefton son by the excellent Kovarik Blackcap 018, a daughter of LT Converse 8011. Luke and Mitchell think very highly of this bull and believe he can positively impact a purebred operation. He blends exceptional growth figures with advanced management traits and dollar figures. Note his top 1% CLAW, 3% ANGLE, 15% RE, 2% \$M, 15% \$W and 20% \$C. This bulls look of quality in tandem with his EPD tabulation, should make him a good fit for any progressive breeder.

Lot 4



Maternal Brother to Lots 3, 4 & 5



LT CHIEFTON 1440, Sire

Lot 4
KOVARIK CHIEFTON 4149
 BD. 08/14/24 AAA. 21294574 TATTOO. 4149

KOUPALS B&B PATHFINDER 8106
LT CHIEFTON 1440
 LT FOREVER LADY 7038

ANGUS
 LT CONVERSE 8011
KOVARIK BLACKCAP 018
 KOVARIK AMANDA 851

LT ENTERPRISE 5213
 B&B BLKBD PROGRESS 3015
 S FOUNDATION 514
 LT FOREVER LADY 5360

CONNELLY CONFIDENCE PLUS
 LT NORDICA 6066
 IRON MTN BOULDER DAM C021
 IRON MTN AMANDA 8150

ACT. BW	94 (ET)
WW RATIO	ET
YW RATIO	ET
SCROTAL	39

CE	BW	WW	YW	MILK	MARB	REA
8	2.3	82	143	25	0.66	0.71
		20%	20%			

\$M	\$W	\$B	\$C
102	81	160	310
3%	20%		20%

Lot 5
KOVARIK CHIEFTON 4147
 BD. 08/14/24 AAA. 21294573 TATTOO. 4147

KOUPALS B&B PATHFINDER 8106
LT CHIEFTON 1440
 LT FOREVER LADY 7038

ANGUS
 LT CONVERSE 8011
KOVARIK BLACKCAP 018
 KOVARIK AMANDA 851

LT ENTERPRISE 5213
 B&B BLKBD PROGRESS 3015
 S FOUNDATION 514
 LT FOREVER LADY 5360

CONNELLY CONFIDENCE PLUS
 LT NORDICA 6066
 IRON MTN BOULDER DAM C021
 IRON MTN AMANDA 8150

ACT. BW	79 (ET)
WW RATIO	ET
YW RATIO	ET
SCROTAL	37

CE	BW	WW	YW	MILK	MARB	REA
4	3.3	74	135	30	0.64	0.83
			30%	25%		

\$M	\$W	\$B	\$C
101	71	160	309
3%			20%

I have these two flush mates marked very well. Lot 4 is a high quality individual with plenty of length and overall performance. Much like his brother, he boasts excellent growth and management traits. Lot 5 is a good looking, smooth built bull, with top 10% HP and 3% \$M figures. These full brothers will definitely add consistency and quality to your operation.



Lot 6

Lot 6 **KOVARIK CHIEFTON 4113**
 BD. 08/09/24 AAA. 21294552 TATTOO. 4113

KOUPALS B&B PATHFINDER 8106
LT CHIEFTON 1440
 LT FOREVER LADY 7038

ANGUS **SS**

S A V RESOURCE 1441
KOVARIK MISS 104
 FINK MISS 8236 5361 XXP

LT ENTERPRISE 5213
 B&B BLKBD PROGRESS 3015
 S FOUNDATION 514
 LT FOREVER LADY 5360

RITO 707 OF IDEAL 3407 7075
 S A V BLACKCAP MAY 4136
 SINCLAIR EMULATION XXP
 FINK MISS 5361 233 FA

CE	BW	WW	YW	MILK	MARB	REA
6	1.2	88	151	25	0.25	0.63
		10%	10%			

\$M	\$W	\$B	\$C
71	88	121	228
	10%		

ACT. BW	76
WW RATIO	113
YW RATIO	111
SCROTAL	39

Lot 6 is marked well in my book. He is ultra-complete in his build with plenty of body depth, and overall performance. Note this bulls advanced growth and management traits, along with his top 10% \$W. His SAV Resource bred dam is one of our favorite cows in the herd.



IRON MTN EMBLYNETTE C107, Dam of Lot 7

Lot 7 **KOVARIK CHIEFTON 4140**
 BD. 08/13/24 AAA. 21294569 TATTOO. 4140

KOUPALS B&B PATHFINDER 8106
LT CHIEFTON 1440
 LT FOREVER LADY 7038

ANGUS **SS**

S A V RESOURCE 1441
IRON MTN EMBLYNETTE C107
 IMC EMBLYNETTE 0308

LT ENTERPRISE 5213
 B&B BLKBD PROGRESS 3015
 S FOUNDATION 514
 LT FOREVER LADY 5360

RITO 707 OF IDEAL 3407 7075
 S A V BLACKCAP MAY 4136
 S A V NET WORTH 4200
 S A V EMBLYNETTE 6806

CE	BW	WW	YW	MILK	MARB	REA
11	-1.5	53	95	26	0.2	0.83
15%	10%					

\$M	\$W	\$B	\$C
108	60	121	265
1%			

ACT. BW	63 (ET)
WW RATIO	ET
YW RATIO	ET
SCROTAL	33.5

This dense made, moderate framed bull, offers more calving ease. With a double-digit CED and negative BW EPD, we feel that this bull can work well on a set of heifers without sacrificing dimension. His maternal traits indicate that his daughters should add value as well. A pair of full brothers sold to Jason Jacobs, Loup City, NE and Ray Gilbert, Buffalo, SD in last year's sale.



Maternal Brother to Lot 8

Lot 8 **KOVARIK CHIEFTON 4117**
 BD. 08/10/24 AAA. 21294555 TATTOO. 4117

KOUPALS B&B PATHFINDER 8106
LT CHIEFTON 1440
 LT FOREVER LADY 7038

ANGUS **SS**

KOVARIK SCALE CRUSHER 721
KOVARIK BLACKCAP BESSIE 145
 KOVARIK BLACKCAP BESSIE 821

LT ENTERPRISE 5213
 B&B BLKBD PROGRESS 3015
 S FOUNDATION 514
 LT FOREVER LADY 5360

MARCYS SCALE CRUSHER
 MARCY'S ERICA 850
 MCCONNELL ALTITUDE 3114
 LT BLACKCAP BESSIE 0141

CE	BW	WW	YW	MILK	MARB	REA
6	0.6	85	147	19	0.3	0.24
		15%	15%			

\$M	\$W	\$B	\$C
95	80	112	240
5%	20%		

ACT. BW	82
WW RATIO	100
YW RATIO	100
SCROTAL	37

Lot 8 is a complete Chiefton son, with good performance figures. His dam goes back to LT Blackcap Bessie 0141. A maternal brother to this bull sold to Brandon Beierman, Albion, NE, in last year's sale.

Lot 9
KOVARIK CHIEFTON 4154
 BD. 08/17/24 AAA. 21294578 TATTOO. 4154

KOUPALS B&B PATHFINDER 8106 LT CHIEFTON 1440 LT FOREVER LADY 7038 ANGUS	LT ENTERPRISE 5213 B&B BLKBD PROGRESS 3015 S FOUNDATION 514 LT FOREVER LADY 5360	ACT. BW 79 WW RATIO 104 YW RATIO 104 SCROTAL 35
S A V RESOURCE 1441 IRON MTN AMANDA B150 S A V AMANDA 1064	RITO 707 OF IDEAL 3407 7075 S A V BLACKCAP MAY 4136 S A F 598 BANDO 5175 S A V AMANDA 5164	

CE	BW	WW	YW	MILK	MARB	REA
6	1.6	78 25%	147 15%	32 15%	0.25	0.72
\$M	\$W	\$B	\$C			
72	77 25%	142	256			

I appreciate the overall build and look of quality in this bull. He is well balanced, with plenty of length, and the appropriate frame. Another Chiefton son that excels in his growth traits as well. A maternal brother sold in last year's sale to Aaron Winkelbauer, Ord, NE.



Lot 10
KOVARIK CHIEFTON 4130
 BD. 08/12/24 AAA. 21294562 TATTOO. 4130

KOUPALS B&B PATHFINDER 8106 LT CHIEFTON 1440 LT FOREVER LADY 7038 ANGUS	LT ENTERPRISE 5213 B&B BLKBD PROGRESS 3015 S FOUNDATION 514 LT FOREVER LADY 5360	ACT. BW 64 WW RATIO 102 YW RATIO 105 SCROTAL 38
TEHAMA PATRIARCH F028 KOVARIK AMANDA 226 KOVARIK AMANDA 026	SS NIAGARA Z29 TEHAMA ELITE BLACKBIRD D826 PAINTROCK TRAPPER IRON MTN AMANDA B150	

CE	BW	WW	YW	MILK	MARB	REA
-1	3.5	92 4%	162 4%	23	0.38	0.51
\$M	\$W	\$B	\$C			
52	77 25%	153	250			

Lot 10 goes back to the Amanda B150 cow that is the direct dam of the bull in front of him. This bull will certainly add performance to any herd. Both his WW & YW EPDs rank within the top 4% of the entire breed. He also excels in this CLAW and ANGLE traits as well.



Lot 11
KOVARIK CHIEFTON 4132
 BD. 08/12/24 AAA. 21294563 TATTOO. 4132

KOUPALS B&B PATHFINDER 8106 LT CHIEFTON 1440 LT FOREVER LADY 7038 ANGUS	LT ENTERPRISE 5213 B&B BLKBD PROGRESS 3015 S FOUNDATION 514 LT FOREVER LADY 5360	ACT. BW 80 WW RATIO 108 YW RATIO 101 SCROTAL 36
S A V RAINDANCE 6848 KOVARIK ETHELDA 956 MARCYS 09 ETHELDA E 24-9	COLEMAN CHARLO 0256 S A V BLACKCAP MAY 4136 MARCYS 07 BROADBAND 1-7 MARCYS 07 ETHELDA E 104-7	

CE	BW	WW	YW	MILK	MARB	REA
4	3.7	83 15%	143 20%	28	0.44	0.81
\$M	\$W	\$B	\$C			
74	77 25%	147	265			

This is one of my personal favorites in terms of his eye appeal and balance. He is a good looking, stout hipped, big ribbed bull that is great on his feet and legs. Like many bulls in this sire group, he offers more performance alongside breed leading management traits.



LT FOREVER LADY 7286, Maternal Granddam to Lot 12



Maternal Brother to Lot 12

Lot 12 **KOVARIK CHIEFTON 4160**
 BD. 08/22/24 AAA. 21294581 TATTOO. 4160

KOUPALS B&B PATHFINDER 8106
LT CHIEFTON 1440
 LT FOREVER LADY 7038

ANGUS S A V RAINFALL 6846
KOVARIK FOREVER LADY 121
 LT FOREVER LADY 7286

LT ENTERPRISE 5213
 B&B BLKBD PROGRESS 3015
 S FOUNDATION 514
 LT FOREVER LADY 5360

COLEMAN CHARLO 0256
 S A V BLACKCAP MAY 4136
 K C F BENNETT TOTAL
 L T FOREVER LADY 9277 ET

ACT. BW	70
WW RATIO	100
YW RATIO	101
SCROTAL	35.5

CE	BW	WW	YW	MILK	MARB	REA
8	0.7	71	124	31	0.47	0.8
				20%		

\$M	\$W	\$B	\$C
78	79	144	265
25%	25%		

This bull goes back to another influential cow in the Kovarik program. LT Forever Lady 7286 produced nine sons that sold in the 2024 sale and another son that sold last year. He is a well-built, sure footed individual.

Lot 13 **KOVARIK CHIEFTON 4124**
 BD. 08/11/24 AAA. 21294559 TATTOO. 4124

KOUPALS B&B PATHFINDER 8106
LT CHIEFTON 1440
 LT FOREVER LADY 7038

ANGUS MCCONNELL ALTITUDE 3114
KOVARIK BLACKCAP BESSIE 832
 LT BLACKCAP BESSIE 0141

LT ENTERPRISE 5213
 B&B BLKBD PROGRESS 3015
 S FOUNDATION 514
 LT FOREVER LADY 5360

CONNELLY COMRADE 1385
 MA BEAUTY 0156
 MYTTY IN FOCUS
 L T MS VALUE NUGGET 2347

ACT. BW	76
WW RATIO	108
YW RATIO	107
SCROTAL	36.5

CE	BW	WW	YW	MILK	MARB	REA
11	-0.3	72	126	30	0.17	0.37
15%	20%			25%		

\$M	\$W	\$B	\$C
79	81	109	220
25%	20%		

Lot 13 is a complete Chiefton son that goes back to the 0141 donor on the bottom side. His dam is a full sister to the dam of last year's lot 1 bull. This bull trends more towards a calving ease prospect and should be well suited for heifers.

Lot 14



SAV ROYAL FLUSH 2735, Sire of Lots 14-19

Lot 14 **KOVARIK ROYAL FLUSH 4144**
 BD. 08/13/24 AAA. 21334116 TATTOO. 4144

S A V RENOVATION 6822
 S A V ROYAL FLUSH 2735
 S A V EMBLYNETTE 2369

S A V RENOWN 3439
 S A V MADAME PRIDE 0151
 S A V 707 RITO 9969
 S A V EMBLYNETTE 7566

ACT. BW
93
 WW RATIO
105
 YW RATIO
104
 SCROTAL
43

ANGUS 33
 LT JEFFERSON 7240
KOVARIK BLACKCAP BESSIE 151
 KOVARIK BLACKCAP BESSIE 905

LT ENTERPRISE 5213
 LT LUCY 1284
 SITZ LOGO 12964
 LT BLACKCAP BESSIE 0141

CE	BW	WW	YW	MILK	MARB	REA
-3	4.5	69	123	25	0.48	0.42

\$M	\$W	\$B	\$C
70	56	130	239

The lead bull in the SAV Royal Flush sire group will be worth the trip to Ord. He is a very well balanced bull that is good in terms of his structural integrity, while still offering plenty of shape and dimension. The dam stems back to the Blackcap Bessie cow family that is heavily featured throughout the last several sales.

Lot 15



Lot 15 KOVARIK ROYAL FLUSH 4118
 BD. 08/10/24 AAA. 21334137 TATTOO. 4118

S A V RENOVATION 6822
S A V ROYAL FLUSH 2735
 S A V EMBLYNETTE 2369
 ANGUS 33
 V D A R SONNY BOY 1194
KOVARIK BLACKCAP BESSIE 838
 LT BLACKCAP BESSIE 0141

S A V RENOWN 3439
 S A V MADAME PRIDE 0151
 S A V 707 RITO 9969
 S A V EMBLYNETTE 7566

V D A R HERO 7072
 V D A R LASS 2582
 MYTTY IN FOCUS
 LT MS VALUE NUGGET 2347

ACT. BW
81 (ET)
 WW RATIO
ET
 YW RATIO
ET
 SCROTAL
37

CE	BW	WW	YW	MILK	MARB	REA
3	3.4	66	123	24	0.33	0.52
\$M	\$W	\$B	\$C			
66	54	105	202			



KOVARIK BLACKCAP BESSIE 838, Dam of Lots 15, 16 & 17

Lot 15 a Royal Flush son out of the cornerstone donor Kovarik Blackcap Bessie 838. This cow has been one of the best producing females in the program. In the 2024 sale, three sons averaged \$12,500. Last year Freouf Angus added a son of hers to use within their purebred herd. This bull is very complete in his build, with plenty of eye appeal, and performance with almost 800 lbs. of weaning growth.



Lot 16 KOVARIK ROYAL FLUSH 4159
 BD. 08/20/24 AAA. 21334142 TATTOO. 4159

S A V RENOVATION 6822 S A V RENOWN 3439 ACT. BW
S A V ROYAL FLUSH 2735 S A V MADAME PRIDE 0151 **92 (ET)**
 S A V EMBLYNETTE 2369 S A V 707 RITO 9969 WW RATIO
ANGUS S A V EMBLYNETTE 7566 ET
 V D A R SONNY BOY 1194 V D A R HERO 7072 YW RATIO
KOVARIK BLACKCAP BESSIE 838 V D A R LASS 2582 ET
 LT BLACKCAP BESSIE 0141 MYTTY IN FOCUS SCROTAL
 LT MS VALUE NUGGET 2347 35

CE	BW	WW	YW	MILK	MARB	REA
-4	5	85	146	21	0.57	0.36
		15%	15%			
\$M	\$W	\$B	\$C			
54	62	130	223			

This pair of full brothers is very consistent. Both are smooth in their design, with plenty of length of spine, and depth of rib. Lot 16 is in the top 15% of the breed for both WW & YW EPDs. Lot 17 boasts a weaning weight of 750 lbs. Keep these bulls together to add uniformity to a calf crop.



Son of Kovarik Blackcap Bessie 838

Lot 17 KOVARIK ROYAL FLUSH 4145
 BD. 08/14/24 AAA. 21334138 TATTOO. 4145

S A V RENOVATION 6822 S A V RENOWN 3439 ACT. BW
S A V ROYAL FLUSH 2735 S A V MADAME PRIDE 0151 **84 (ET)**
 S A V EMBLYNETTE 2369 S A V 707 RITO 9969 WW RATIO
ANGUS S A V EMBLYNETTE 7566 ET
 V D A R SONNY BOY 1194 V D A R HERO 7072 YW RATIO
KOVARIK BLACKCAP BESSIE 838 V D A R LASS 2582 ET
 LT BLACKCAP BESSIE 0141 MYTTY IN FOCUS SCROTAL
 LT MS VALUE NUGGET 2347 35

CE	BW	WW	YW	MILK	MARB	REA
6	1.5	69	126	21	0.22	0.38
\$M	\$W	\$B	\$C			
69	58	104	204			

This pair of full brothers is very consistent. Both are smooth in their design, with plenty of length of spine, and depth of rib. Lot 16 is in the top 15% of the breed for both WW & YW EPDs. Lot 17 boasts a weaning weight of 750 lbs. Keep these bulls together to add uniformity to a calf crop.



Maternal Brother to Lots 15-17

Lot 18 KOVARIK ROYAL FLUSH 492
 BD. 08/02/24 AAA. 21334136 TATTOO. 492

S A V RENOVATION 6822 S A V RENOWN 3439 ACT. BW
S A V ROYAL FLUSH 2735 S A V MADAME PRIDE 0151 **80**
 S A V EMBLYNETTE 2369 S A V 707 RITO 9969 WW RATIO
ANGUS S A V EMBLYNETTE 7566 102
 MCCONNELL ALTITUDE 3114 CONNEALY COMRADE 1385 YW RATIO
KOVARIK BLACKCAP BESSIE 821 MA BEAUTY 0156 99
 LT BLACKCAP BESSIE 0141 MYTTY IN FOCUS SCROTAL
 LT MS VALUE NUGGET 2347 35

CE	BW	WW	YW	MILK	MARB	REA
3	1.8	72	131	18	0.73	0.33
\$M	\$W	\$B	\$C			
76	56	136	252			
30%						

The dam of this bull is a full sister to the dam of last years lot 1, Kovarik Debut 322. A very complete, smoothly built individual with good Docility, Claw and Angle scores.

Lot 19 KOVARIK ROYAL FLUSH 4155
 BD. 08/17/24 AAA. 21334132 TATTOO. 4155

S A V RENOVATION 6822 S A V RENOWN 3439 ACT. BW
S A V ROYAL FLUSH 2735 S A V MADAME PRIDE 0151 **90**
 S A V EMBLYNETTE 2369 S A V 707 RITO 9969 WW RATIO
ANGUS S A V EMBLYNETTE 7566 91
 S FOUNDATION 514 VISION UNANIMOUS 1418 YW RATIO
KOVARIK ELITE LADY 168 S LADY ANN 8384 95
 LT ELITE LADY 9102 TC ABERDEEN 759 SCROTAL
 LT ELITE LADY 3135 33

CE	BW	WW	YW	MILK	MARB	REA
-12	7	64	122	23	1.09	0.57
					25%	
\$M	\$W	\$B	\$C			
37	28	164	250			

I appreciate the length of spine and depth of rib of lot 19. A maternal brother sold in the 2025 sale to Grant Jackson, McCool Junction, NE.



Lot 20



KOUPALS B&B SIGNAL 1159, Sire of Lots 20-24



LT BLACKCAP BESSIE 0141, Dam of Lots 20 & 21

Lot 20
KOVARIK SIGNAL 4101
 BD. 08/07/24 AAA. 21334112 TATTOO. 4101

S A V TERRITORY 7225 KOUPALS B&B SIGNAL 1159 B&B BLKBD PROGRESS 3015	S A V RESOURCE 1441 S A V EMBLYNETTE 3293 KOUPALS B&B IDENTITY B&B BLKBD PROGRESS 0049	ACT. BW 74 (ET) WW RATIO ET YW RATIO ET SCROTAL 39
ANGUS MYTTY IN FOCUS LT BLACKCAP BESSIE 0141 L T MS VALUE NUGGET 2347	S A F FOCUS OF E R MYTTY COUNTESS 906 SITZ VALUE 7097 ANDORA BLKCP BESSIE 9041	

CE	BW	WW	YW	MILK	MARB	REA
6	0.8	71	119	29 30%	0.41	0.48
\$M	\$W	\$B	\$C			
74	76 30%	116	224			

Lot 21
KOVARIK SIGNAL 4103
 BD. 08/07/24 AAA. 21353552 TATTOO. 4103

S A V TERRITORY 7225 KOUPALS B&B SIGNAL 1159 B&B BLKBD PROGRESS 3015	S A V RESOURCE 1441 S A V EMBLYNETTE 3293 KOUPALS B&B IDENTITY B&B BLKBD PROGRESS 0049	ACT. BW 76 (ET) WW RATIO ET YW RATIO ET SCROTAL 38
ANGUS MYTTY IN FOCUS LT BLACKCAP BESSIE 0141 L T MS VALUE NUGGET 2347	S A F FOCUS OF E R MYTTY COUNTESS 906 SITZ VALUE 7097 ANDORA BLKCP BESSIE 9041	

CE	BW	WW	YW	MILK	MARB	REA
6	0.2 30%	68	116	21	0.59	0.14
\$M	\$W	\$B	\$C			
65	60	118	218			

A pair of flushmate brothers by Koupals B&B Signal and out of the cornerstone donor, LT Blackcap Bessie 0141. Both bulls are balanced in their genetic profiles with inherent advantages in maternal strength. Note that 0141 is on the maternal side of many of Kovarik's past sale features.



Lot 22
KOVARIK SIGNAL 499
 BD. 08/06/24 AAA. 21334107 TATTOO. 499

S A V TERRITORY 7225
KOUPALS B&B SIGNAL 1159
 B&B BLKBD PROGRESS 3015

ANGUS S A V RESOURCE 1441
 S A V EMBLYNETTE 3293
 KOUPALS B&B IDENTITY
 B&B BLKBD PROGRESS 0049

MARCYS MADISON 67-8
KOVARIK BLACKCAP BESSIE 036
 KOVARIK BLACKCAP BESSIE 821

MARCYS SCALE CRUSHER
 MARCYS 13 ETHELDA E 50-3
 MCCONNELL ALTITUDE 3114
 LT BLACKCAP BESSIE 0141

ACT. BW	87 (ET)
WW RATIO	ET
YW RATIO	ET
SCROTAL	34.5

CE	BW	WW	YW	MILK	MARB	REA
11	-0.3	64	108	26	0.51	1.08
15%	20%					15%

\$M	\$W	\$B	\$C
93	73	142	277
10%			

This maternal brother to Lot 1 should be suitable for heifers. He is a keen headed, smooth shouldered individual with good calving EPDs and a top 10% \$M.

Lot 23
KOVARIK SIGNAL 4126
 BD. 08/11/24 AAA. 21334108 TATTOO. 4126

S A V TERRITORY 7225
KOUPALS B&B SIGNAL 1159
 B&B BLKBD PROGRESS 3015

ANGUS S A V RESOURCE 1441
 S A V EMBLYNETTE 3293
 KOUPALS B&B IDENTITY
 B&B BLKBD PROGRESS 0049

LT JEFFERSON 7240
KOVARIK ERICA 048
 MARCYS ERICA 215

LT ENTERPRISE 5213
 LT LUCY 1284
 S A V FINAL ANSWER 0035
 MARCYS ERICA 940

ACT. BW	80
WW RATIO	94
YW RATIO	97
SCROTAL	35

CE	BW	WW	YW	MILK	MARB	REA
11	-0.1	70	118	24	0.52	0.72
15%	25%					

\$M	\$W	\$B	\$C
75	71	126	238
30%			

Another calving ease prospect with a good build, and strong maternal traits. Top 15% HP & 25% FL.

Lot 24
KOVARIK SIGNAL 4137
 BD. 08/13/24 AAA. 21334105 TATTOO. 4137

S A V TERRITORY 7225
KOUPALS B&B SIGNAL 1159
 B&B BLKBD PROGRESS 3015

ANGUS S A V RESOURCE 1441
 S A V EMBLYNETTE 3293
 KOUPALS B&B IDENTITY
 B&B BLKBD PROGRESS 0049

CONNELLY KILROY
KOVARIK FOREVER LADY 177
 LT FOREVER LADY 7286

BASIN PAYWEIGHT 1682
 ELBANNA OF CONANGA 1209
 K C F BENNETT TOTAL
 LT FOREVER LADY 9277 ET

ACT. BW	74
WW RATIO	89
YW RATIO	92
SCROTAL	35

CE	BW	WW	YW	MILK	MARB	REA
8	0.1	56	92	26	0.66	0.77
	25%					

\$M	\$W	\$B	\$C
64	58	131	234

I appreciate this bulls added depth of rib and functional build. The Signal sire group should produce excellent replacement females that hold up for years.



Lot 26



LT FOREVER LADY 5360, Dam of Lot 26

Lot 25
KOVARIK QUALITY 4162
 BD. 09/02/24 AAA. 21337286 TATTOO. 4162

TEF OUTSIDE 514 KR QUALITY 8525 KR LUCY ROSE 6587	HA OUTSIDE 3008 T E F JET PRINCESS 714 MAY-WAY EQUITY KR LUCY ROSE 4086	ACT. BW 74 WW RATIO 101 YW RATIO 101 SCROTAL 39
BAR R JET BLACK 5063 FRENZEN MAYFLOWER ANN G31 FRENZEN LASS E23	CONNELLY BLACK GRANITE BAR R IRIS ANITA 0113 QUAKER HILL RAMPAGE 0A36 FRENZEN LASS C15	

CE	BW	WW	YW	MILK	MARB	REA
16	-2.3	73	136	28	0.49	0.71
2%	3%		25%			
\$M	\$W	\$B	\$C			
75	74	162	285			
30%						

Lot 25 offers a different pedigree than most Kovarik customers are used to. This KR Quality son is a big ribbed, heifer bull prospect with high calving ease figures and solid growth EPDs. This bull is balanced on paper and in terms of eye appeal.

Lot 26
KOVARIK DEEP CANYON 495
 BD. 08/04/24 AAA. 21333955 TATTOO. 495

ELLINGSON BADLANDS 0285 LT DEEP CANYON 2040 LT LADY NUGGET 0154	ELLINGSON RIDER PRIDE 7282 EA BELLS GIRL 7617 LT CONVERSE 8011 LT LADY NUGGET 7092	ACT. BW 75 (ET) WW RATIO ET YW RATIO ET SCROTAL 40
LT CHALLENGER 3462 LT FOREVER LADY 5360 LT FOREVER LADY 0068	S A V FINAL ANSWER 0035 L T ELITE LADY 2238 MYTTY IN FOCUS LT FOREVER LADY 8418	

CE	BW	WW	YW	MILK	MARB	REA
8	0.2	74	123	35	0.63	0.5
	30%			10%		
\$M	\$W	\$B	\$C			
82	89	146	271			
20%	10%					

This is a son of past LT high seller, LT Deep Canyon and out of the LT Forever Lady 5360 cow. He offers good growth and maternal strength. He is a well-balanced, eye appealing bull.

Lot 27
KOVARIK JUSTIFICATION 496
 BD. 08/05/24 AAA. 21334159 TATTOO. 496

KG JUSTIFIED 3023 BOYD JUSTIFICATION BOYD ABIGALE 9056	CONNELLY JUDGMENT KG MISS MAGIC 1443 CONNELLY MAINSTAY BOYD ABIGALE 6079	ACT. BW 68 WW RATIO 88 YW RATIO 94 SCROTAL 37
ELLINGSON PROFOUND 8155 KOVARIK FOREVER LADY 231 LT FOREVER LADY 7286	S POWERPOINT WS 5503 EA ROSETTA 6157 K C F BENNETT TOTAL L T FOREVER LADY 9277 ET	

CE	BW	WW	YW	MILK	MARB	REA
13	0.4	78	132	21	0.47	0.81
10%	30%	25%				
\$M	\$W	\$B	\$C			
78	72	146	267			
25%						

The Boyd Justification sire group was very popular last year. This son is out of a first calf daughter of the 7286 donor. Excellent calving ease, and growth figures.



KR QUALITY 8525, Sire of Lot 26

We will kick off the two-year-old division with a set of flush brothers by the popular GENEX sire, S Architect. I have this lead bull very highly marked. I read him as being very complete in his build with extra length of spine, and plenty of muscle. He excels in terms of his EPD profile as well. From performance to carcass and management traits, this bull will add quality to any set of cows. He is a herd sire prospect for sure.



S ARCHITECT, Sire of Lots 28-34



A more moderate framed version of his brother ahead of him. Lot 29 is a big topped, stout hipped, bold ribbed bull, with the look of quality. I have this bull highly marked. Another bull that excels in his growth traits while still being in the top 4% for HP & 2% \$M.

Lot 28 **KOVARIK ARCHITECT 457**
 BD. 04/21/24 AAA. 21122782 TATTOO. 457

SYDGEN BLUEPRINT
S ARCHITECT 9501
 S BLOSSOM 7514
ANGUS

CONNEALY CONFIDENCE PLUS
LT ETHENA 8068
 LT ETHENA 6112

KM BROKEN BOW 002
 SITZ FLORABELLE FANNY 4735
 S WHITLOCK 179
 S BLOSSOM 5525

CONNEALY CONFIDENCE 0100
 ELBANNA OF CONANGA 1209
 KOUPALS B&B TITAN 3013
 LT ETHENA 2195

ACT. BW	70 (ET)
WW RATIO	ET
YW RATIO	ET
SCROTAL	44

CE	BW	WW	YW	MILK	MARB	REA
-1	1.8	86	143	27	1.02	0.73
		10%	20%		30%	

\$M	\$W	\$B	\$C
102	93	191	350
3%	5%	20%	10%

Lot 29 **KOVARIK ARCHITECT 463**
 BD. 04/22/24 AAA. 21122786 TATTOO. 463

SYDGEN BLUEPRINT
S ARCHITECT 9501
 S BLOSSOM 7514
ANGUS

CONNEALY CONFIDENCE PLUS
LT ETHENA 8068
 LT ETHENA 6112

KM BROKEN BOW 002
 SITZ FLORABELLE FANNY 4735
 S WHITLOCK 179
 S BLOSSOM 5525

CONNEALY CONFIDENCE 0100
 ELBANNA OF CONANGA 1209
 KOUPALS B&B TITAN 3013
 LT ETHENA 2195

ACT. BW	87 (ET)
WW RATIO	ET
YW RATIO	ET
SCROTAL	39

CE	BW	WW	YW	MILK	MARB	REA
7	-0.2	75	126	26	0.89	0.41
	20%					

\$M	\$W	\$B	\$C
107	83	145	295
2%	15%		30%

Lot 30



Lot 30 **KOVARIK ARCHITECT 439**
 BD. 04/14/24 AAA. 21122781 TATTOO. 439

SYDGEN BLUEPRINT
S ARCHITECT 9501
 S BLOSSOM 7514
ANGUS
 CONNEALY CONFIDENCE PLUS
LT ETHENA 8068
 LT ETHENA 6112

KM BROKEN BOW 002
 SITZ FLORABELLE FANNY 4735
 S WHITLOCK 179
 S BLOSSOM 5525

CONNEALY CONFIDENCE 0100
 ELBANNA OF CONANGA 1209
 KOUPALS 8&8 TITAN 3013
 LT ETHENA 2195

ACT. BW
78 (ET)
 WW RATIO
ET
 YW RATIO
ET
 SCROTAL
38

CE	BW	WW	YW	MILK	MARB	REA
5	0.8	81	143	29	0.51	0.44
		20%	20%	30%		
\$M	\$W	\$B	\$C			
119	91	143	304			
1%	10%		25%			

If you need to add consistency to your herd, I recommend keeping several of these flush brothers together. This bull is ideal in his frame size with a good build, excellent structure, and plenty of maternal strength bred into him.

Lot 31 **KOVARIK ARCHITECT 474**
 BD. 04/25/24 AAA. 21122792 TATTOO. 474

SYDGEN BLUEPRINT
S ARCHITECT 9501
 S BLOSSOM 7514
ANGUS
 CONNEALY CONFIDENCE PLUS
LT ETHENA 8068
 LT ETHENA 6112

KM BROKEN BOW 002
 SITZ FLORABELLE FANNY 4735
 S WHITLOCK 179
 S BLOSSOM 5525

CONNEALY CONFIDENCE 0100
 ELBANNA OF CONANGA 1209
 KOUPALS 8&8 TITAN 3013
 LT ETHENA 2195

ACT. BW
88 (ET)
 WW RATIO
ET
 YW RATIO
ET
 SCROTAL
38

CE	BW	WW	YW	MILK	MARB	REA
3	2.5	85	143	27	0.67	0.52
		15%	20%			
\$M	\$W	\$B	\$C			
105	90	147	296			
2%	10%		30%			

I had this bull highly marked when I saw him ahead of the sale. He is a dense made, soggy centered individual with good eye appeal. When these flush mates get penned on sale day, they will attract a lot of attention.

Lot 32 **KOVARIK ARCHITECT 459**
 BD. 04/21/24 AAA. 21122783 TATTOO. 459

SYDGEN BLUEPRINT
S ARCHITECT 9501
 S BLOSSOM 7514
ANGUS
 CONNEALY CONFIDENCE PLUS
LT ETHENA 8068
 LT ETHENA 6112

KM BROKEN BOW 002
 SITZ FLORABELLE FANNY 4735
 S WHITLOCK 179
 S BLOSSOM 5525

CONNEALY CONFIDENCE 0100
 ELBANNA OF CONANGA 1209
 KOUPALS 8&8 TITAN 3013
 LT ETHENA 2195

ACT. BW
78 (ET)
 WW RATIO
ET
 YW RATIO
ET
 SCROTAL
42

CE	BW	WW	YW	MILK	MARB	REA
9	-0.2	77	134	23	0.52	0.55
30%	20%	30%	30%			
\$M	\$W	\$B	\$C			
90	78	156	292			
10%	25%		30%			

Of this group of flush brothers, this is the bull that trends towards a more heifer safe bull. He was moderate at birth and his EPD indicators predict that he should offer more calving ease.





LT BLACKCAP BESSIE 0141, Dam of Lots 33 & 34

Lot 33 **KOVARIK ARCHITECT 440**
 BD. 04/14/24 AAA. 21122802 TATTOO. 440

SYDGEN BLUEPRINT
S ARCHITECT 9501
 S BLOSSOM 7514
ANGUS
 MYTTY IN FOCUS
LT BLACKCAP BESSIE 0141
 LT MS VALUE NUGGET 2347

KM BROKEN BOW 002
 SITZ FLORABELLE FANNY 4735
 S WHITLOCK 179
 S BLOSSOM 5525

S A F FOCUS OF E R
 MYTTY COUNTNESS 906
 SITZ VALUE 7097
 ANDORA BLKCP BESSIE 9041

ACT. BW	70 (ET)
WW RATIO	ET
YW RATIO	ET
SCROTAL	40

CE	BW	WW	YW	MILK	MARB	REA
12	-1.2	68	112	31	0.64	0.25
10%	10%			20%		
\$M	\$W	\$B	\$C			
98	85	122	256			
4%	15%					

Lot 34 **KOVARIK ARCHITECT 441**
 BD. 04/14/24 AAA. 21122803 TATTOO. 441

SYDGEN BLUEPRINT
S ARCHITECT 9501
 S BLOSSOM 7514
ANGUS
 MYTTY IN FOCUS
LT BLACKCAP BESSIE 0141
 LT MS VALUE NUGGET 2347

KM BROKEN BOW 002
 SITZ FLORABELLE FANNY 4735
 S WHITLOCK 179
 S BLOSSOM 5525

S A F FOCUS OF E R
 MYTTY COUNTNESS 906
 SITZ VALUE 7097
 ANDORA BLKCP BESSIE 9041

ACT. BW	80 (ET)
WW RATIO	ET
YW RATIO	ET
SCROTAL	39

CE	BW	WW	YW	MILK	MARB	REA
7	0.9	85	144	26	0.49	0.43
		15%	20%			
\$M	\$W	\$B	\$C			
86	90	138	265			
15%	10%					

A pair of flush brothers by Architect out of the LT Blackcap Bessie 0141 donor. These two bulls offer their own advantages and are worth a look. Lot 33 is more of a calving ease bull with breed leading EPDs in that area. Lot 34 gives you more growth at weaning and yearling. Both bulls should leave an excellent set of replacement heifers.





Lot 35



KOVARIK CHIEF 315, Full Brother to Lot 35



SITZ MANOR 3195, Dam

Lot 35
KOVARIK CHIEFTON 487
 BD. 05/01/24 AAA. 21121627 TATTOO. 487

KOUPALS B&B PATHFINDER 8106
LT CHIEFTON 1440
 LT FOREVER LADY 7038

ANGUS

SITZ RAINMAKER 11127
SITZ MANOR 3195
 SITZ MANOR 3462

LT ENTERPRISE 5213
 B&B BLKBD PROGRESS 3015
 S FOUNDATION 514
 LT FOREVER LADY 5360

SITZ RAINMAKER 8075
 SITZ EMMA E 417L
 SITZ UPWARD 307R
 SITZ MANOR 1924

ACT. BW	85 (ET)
WW RATIO	ET
YW RATIO	ET
SCROTAL	40

CE	BW	WW	YW	MILK	MARB	REA
7	3	92	166	32	0.3	0.66
		4%	3%	15%		
\$M	\$W	\$B	\$C			
91	90	159	297			
10%	10%		30%			

This is a full brother to Lot 2 earlier in the book, and a full brother to the 2025 high seller, Kovarik Chief, that went to Raven Angus in South Dakota. This is a herd sire prospect that excels in his growth, maternal, and management traits. The entire Chiefton sire group will add red meat yield and overall performance. That is complemented by the maternal strength transmitted by the 3195 donor.





Lot 36



LT CHIEFTON 1440, Sire



LOT 1, Maternal Brother

This is one of my highest marked two-year-olds in the offering. He is a maternal brother to the Lot 1 bull earlier in the book. This Chiefton son is very good. He offers plenty of calving ease, alongside the performance attributed to the Chiefton sire group. This is a heifer bull prospect that has eye appeal and is good on his feet and legs.

Lot 36

KOVARIK CHIEFTON 435

BD. 04/09/24

AAA, 21121611

TATTOO, 435

KOUPALS B&B PATHFINDER 8106
LT CHIEFTON 1440
 LT FOREVER LADY 7038

LT ENTERPRISE 5213
 B&B BLKBD PROGRESS 3015
 S FOUNDATION 514
 LT FOREVER LADY 5360

ACT. BW
63
 WW RATIO
100
 YW RATIO
100
 SCROTAL
40

ANGUS
 MARCYS MADISON 67-8
KOVARIK BLACKCAP BESSIE 036
 KOVARIK BLACKCAP BESSIE 821

MARCYS SCALE CRUSHER
 MARCYS 13 ETHELDA E 50-3
 MCCONNELL ALTITUDE 3114
 LT BLACKCAP BESSIE 0141

CE	BW	WW	YW	MILK	MARB	REA
10	-1.1	74	128	20	0.48	0.59
20%	10%					
\$M	\$W	\$B	\$C			
77	73	144	264			
30%						





LT BLACKCAP BESSIE 0141, Dam of Lots 37, 38 & 39

Lot 37
KOVARIK CHIEFTON 480
 BD. 04/29/24 AAA. 21121620 TATTOO. 480

LT CHIEFTON 1440
 KROUPALS B&B PATHFINDER 8106
 LT FOREVER LADY 7038
 ANGUS **SS**

LT BLACKCAP BESSIE 0141
 MYTTY IN FOCUS
 LT MS VALUE NUGGET 2347

LT ENTERPRISE 5213
 B&B BLKBD PROGRESS 3015
 S FOUNDATION 514
 LT FOREVER LADY 5360

S A F FOCUS OF E R
 MYTTY COUNTNESS 906
 SITZ VALUE 7097
 ANDORA BLKCP BESSIE 9041

ACT. BW
84 (ET)
 WW RATIO
ET
 YW RATIO
ET
 SCROTAL
39

CE	BW	WW	YW	MILK	MARB	REA
10	-1.1	64	105	29	0.05	0.15
20%	10%			30%		
\$M	\$W	\$B	\$C			
88	75	92	207			
15%	30%					

Lot 38
KOVARIK CHIEFTON 468
 BD. 04/24/24 AAA. 21121623 TATTOO. 468

LT CHIEFTON 1440
 KROUPALS B&B PATHFINDER 8106
 LT FOREVER LADY 7038
 ANGUS **SS**

LT BLACKCAP BESSIE 0141
 MYTTY IN FOCUS
 LT MS VALUE NUGGET 2347

LT ENTERPRISE 5213
 B&B BLKBD PROGRESS 3015
 S FOUNDATION 514
 LT FOREVER LADY 5360

S A F FOCUS OF E R
 MYTTY COUNTNESS 906
 SITZ VALUE 7097
 ANDORA BLKCP BESSIE 9041

ACT. BW
70 (ET)
 WW RATIO
ET
 YW RATIO
ET
 SCROTAL
39

CE	BW	WW	YW	MILK	MARB	REA
9	1.4	77	125	27	0.19	0.21
30%		30%				
\$M	\$W	\$B	\$C			
59	80	113	206			
	20%					

Lot 39
KOVARIK CHIEFTON 465
 BD. 04/23/24 AAA. 21121622 TATTOO. 465

LT CHIEFTON 1440
 KROUPALS B&B PATHFINDER 8106
 LT FOREVER LADY 7038
 ANGUS **SS**

LT BLACKCAP BESSIE 0141
 MYTTY IN FOCUS
 LT MS VALUE NUGGET 2347

LT ENTERPRISE 5213
 B&B BLKBD PROGRESS 3015
 S FOUNDATION 514
 LT FOREVER LADY 5360

S A F FOCUS OF E R
 MYTTY COUNTNESS 906
 SITZ VALUE 7097
 ANDORA BLKCP BESSIE 9041

ACT. BW
73 (ET)
 WW RATIO
ET
 YW RATIO
ET
 SCROTAL
40

CE	BW	WW	YW	MILK	MARB	REA
9	-0.1	65	105	28	0.34	0.52
30%	25%					
\$M	\$W	\$B	\$C			
85	74	117	237			
15%						

This trio of flush brothers are by Chiefton, out of the 0141 donor. They are very similar in type and kind. They are very complete in their build, with plenty of center body, and are good structured. Each individual gives you certain advantages, but keep them together if you want consistent, high quality feeder cattle, and replacement heifers.

Lot 40



KOUPALS B&B HOLY WATER 2021, Sire



VDAR LUCY 4361, Dam of 40, 41 & 42

The next three bulls are out of the VDAR Lucy 4361 donor. Luke acquired her in 2022, mainly due to her maternal strength. While at VDAR she had a calving interval of 363 days on seven calves. This son of Koupals B&B Holy Water is exceptional. He is thick ended, big topped, and has a herd bull look from the side. Luke strives to maximize maternal traits without sacrificing performance. This bull will easily achieve those goals.

Lot
40

KOVARIK HOLY WATER 442

BD. 04/14/24 AAA. 21124186 TATTOO. 442

SQUARE B ATLANTIS 8060
KOUPALS B&B HOLY WATER 2021
 B&B BLKBD PROGRESS 3015

ANGUS SS

KOUPAL JUNEAU 797
VDAR LUCY 4361
 V D A R LUCY 0326

S A V RAINFALL 6846
 ELBANNA OF CONANGA 1209
 KOUPALS B&B IDENTITY
 B&B BLKBD PROGRESS 0049

O C C JUNEAU 807J
 KOUPALS ELBA 187
 V D A R REALLY WINDY 4097
 V D A R LUCY 8648

ACT. BW
88 (ET)

WW RATIO
ET

YW RATIO
ET

SCROTAL
37

CE	BW	WW	YW	MILK	MARB	REA
0	2.6	75	123	33	0.4	0.66
				15%		
\$M	\$W	\$B	\$C			
91	82	129	258			
10%	20%					

Lot 41



BOYD JUSTIFICATION, Sire of Lots 41-43

Lot 41 KOVARIK JUSTIFICATION 444
 BD. 04/14/24 AAA. 21122347 TATTOO. 444

KG JUSTIFIED 3023
BOYD JUSTIFICATION
 BOYD ABIGALE 9056
ANGUS
 KOU PAL JUNE AU 797
V D A R LUCY 4361
 V D A R LUCY 0326

CONN EALY JUDGMENT
 KG MISS MAGIC 1443
 CONNEALY MAINSTAY
 BOYD ABIGALE 6079

O C C JUNE AU 807J
 KOU PALS ELBA 187
 V D A R REALY WINDY 4097
 V D A R LUCY 8648

ACT. BW
83 (ET)
 WW RATIO
ET
 YW RATIO
ET
 SCROTAL
38

CE	BW	WW	YW	MILK	MARB	REA
7	0.6	72	122	30	0.1	0.78
25%						

\$M	\$W	\$B	\$C
108	83	103	242
1% 15%			

This 4361 son is sired by Boyd Justification. He is a very complete individual that I have marked well in my book. He is built well with a good look from the side, and plenty of substance. Make sure to note his top 4% HP & 1% \$M.

Lot 42 KOVARIK JUSTIFICATION 448
 BD. 04/15/24 AAA. 21122348 TATTOO. 448

KG JUSTIFIED 3023
BOYD JUSTIFICATION
 BOYD ABIGALE 9056
ANGUS
 KOU PAL JUNE AU 797
V D A R LUCY 4361
 V D A R LUCY 0326

CONN EALY JUDGMENT
 KG MISS MAGIC 1443
 CONNEALY MAINSTAY
 BOYD ABIGALE 6079

O C C JUNE AU 807J
 KOU PALS ELBA 187
 V D A R REALY WINDY 4097
 V D A R LUCY 8648

ACT. BW
97 (ET)
 WW RATIO
ET
 YW RATIO
ET
 SCROTAL
39.5

CE	BW	WW	YW	MILK	MARB	REA
2	1.2	76	126	29	0.02	0.75
30% 30%						

\$M	\$W	\$B	\$C
100	86	93	221
3% 15%			

Lot 42 is a high quality bull that will add value to your herd. He is good structured with plenty of mass and eye appeal. He excels in several management traits as well.

Lot 43 KOVARIK JUSTIFICATION 455
 BD. 04/19/24 AAA. 21122354 TATTOO. 455

KG JUSTIFIED 3023
BOYD JUSTIFICATION
 BOYD ABIGALE 9056
ANGUS
 MYTTY IN FOCUS
LT BLACKCAP BESSIE 0141
 LT MS VALUE NUGGET 2347

CONN EALY JUDGMENT
 KG MISS MAGIC 1443
 CONNEALY MAINSTAY
 BOYD ABIGALE 6079

S A F FOCUS OF E R
 MYTTY COUNTESS 906
 SITZ VALIE 7097
 ANDORA BLKCP BESSIE 9041

ACT. BW
78 (ET)
 WW RATIO
ET
 YW RATIO
ET
 SCROTAL
42

CE	BW	WW	YW	MILK	MARB	REA
14	-0.9	66	110	20	0.68	0.38
4% 15%						

\$M	\$W	\$B	\$C
85	68	117	237
15%			

This is a heifer bull out of the 0141 donor. He is a good headed bull, who is ultra-complete in his build. He does the little things correctly as well, top 20% DOC, 10% CLAW & ANGLE.



High Selling Son of Boyd Justification from 2025 Sale



Lot 44
KOVARIK ELITE 433
 BD. 04/04/24 AAA. 21121613 TATTOO. 433

TC ELITE 772
VIN-MAR ELITE 1231
 MCC SUPERMAMA 7279

ANGUS
 KRAYE ABUNDANCE JK 9282
E D PRIDE 139
 E D PRIDE 916

JMB TRACTION 292
 TC FOREVER LADY 4153
 S A V TEN SPEED 3022
 MCC SUPERMAMA 7212

S A V ABUNDANCE 6117
 QUEEN JK 1178
 SIMONSON MAIN EVENT 8427
 MARCY'S 98 PRIDE 89-8

ACT. BW	85
WW RATIO	102
YW RATIO	103
SCROTAL	39

CE	BW	WW	YW	MILK	MARB	REA
8	1	72	120	35	0.72	0.61
				10%		
\$M	\$W	\$B	\$C			
75	83	147	266			
30%	15%					

I really like this pair of Vin-Mar Elite sons. Lot 44 is a stocky, deep sided, good looking bull who offers a balanced EPD package. This bull excels in his Claw & Angle figures as well.

Lot 45
KOVARIK ELITE 446
 BD. 04/15/24 AAA. 21121619 TATTOO. 446

TC ELITE 772
VIN-MAR ELITE 1231
 MCC SUPERMAMA 7279

ANGUS
 S A V PRESIDENT 6847
E D ERICA 036 OF 910
 E D ERICA 910

JMB TRACTION 292
 TC FOREVER LADY 4153
 S A V TEN SPEED 3022
 MCC SUPERMAMA 7212

COLEMAN CHARLO 0256
 S A V BLACKCAP MAY 4136
 B C MATRIX 4132
 E D ERICA 515

ACT. BW	76
WW RATIO	94
YW RATIO	97
SCROTAL	40

CE	BW	WW	YW	MILK	MARB	REA
6	1.8	78	123	27	0.56	0.96
				25%		
\$M	\$W	\$B	\$C			
53	84	131	223			
	15%					

The second in a pair of Vin-Mar Elite sons, this bull being out of an SAV President dam. He is moderate framed, bid middled, and stout structured. He is well above average for several traits to go along with his look of quality.

Lot 46
KOVARIK SCULPTED 436
 BD. 04/09/24 AAA. 21121615 TATTOO. 436

BALDRIDGE FLAGSTONE F411
AMDAHL SCULPTED
 AMDAHL JD MISS FM 030-010

ANGUS
 JMB TRACTION 292
MARCYS TREASURE 7104
 MARCY'S TREASURE 015

HOOVER NO DOUBT
 BALDRIDGE ISABEL Y69
 MOGCK FRONTMAN 1141
 AMDAHL'S JD MISS 22 030

SITZ TOP GAME 561K
 JMB EMULOTA 013
 O C C EMBLAZON 854E
 BALDRIDGE TREASURE M510

ACT. BW	96
WW RATIO	107
YW RATIO	100
SCROTAL	39

CE	BW	WW	YW	MILK	MARB	REA
5	2.8	73	122	20	0.48	0.68
\$M	\$W	\$B	\$C			
87	65	129	254			
15%						

I had this bull highly marked as well. With sires like Hoover No Doubt, JMB Traction, and OCC Emblazon in his pedigree, he checks the boxes from a genetic perspective.

Lot 47
KOVARIK SMOOTH BORE 452
 BD. 04/18/24 AAA. 21121621 TATTOO. 452

SPRING COVE RENO 4021
MARCYS SMOOTH BORE 030
 MARCY'S ERICA 221

ANGUS
 MARCY'S SCALE CRUSHER 8164
MARCYS ERICA 0156
 MARCY'S ERICA 6115

KM BROKEN BOW 002
 SPRING COVE LIZA 021
 SITZ UPWARD 307R
 MARCY'S ERICA 867

MARCYS SCALE CRUSHER
 MARCY'S ETHELDA 439
 MARCY'S PACKER 422
 MARCY'S ERICA 4152

ACT. BW	62
WW RATIO	96
YW RATIO	99
SCROTAL	41

CE	BW	WW	YW	MILK	MARB	REA
13	-1.1	69	119	25	0.83	0.18
10%	10%					
\$M	\$W	\$B	\$C			
90	68	124	251			
10%						

Here is a calving ease bull with a shot more frame and length. Another bull that offers plenty of strength in terms of maternal traits. A good bull that will cover a lot of cows.



The next seven bulls are all full brothers. Sired by the leading registration sire in the breed, Connealy Craftsman and out of the proven Sitz. Manor 3195. This set of flush brothers are big framed, long spined, and will cover a lot of country. Craftsman sons are in high demand, and the daughters look to be high impact females.

Lot 48
KOVARIK CRAFTSMAN 489
 BD. 05/04/24 AAA. 21122858 TATTOO. 489

SITZ RESILIENT 10208
CONNEALY CRAFTSMAN
 BLACK CATHY OF CONANGA 8521

ANGUS SITZ RAINMAKER 11127
SITZ MANOR 3195
 SITZ MANOR 3462

SITZ STELLAR 726D
 SITZ MISS BURGESS 1856
 CONNEALY NIOBRARA 5451
 BLACK CARLA OF CONANGA 450

SITZ RAINMAKER 8075
 SITZ EMMA E 417L
 SITZ UPWARD 307R
 SITZ MANOR 1924

ACT. BW	96 (ET)
WW RATIO	ET
YW RATIO	ET
SCROTAL	41

CE	BW	WW	YW	MILK	MARB	REA
5	1.1	73	125	41	0.61	0.81
				1%		

\$M	\$W	\$B	\$C
113	101	146	302
1%	2%		25%

Lot 49
KOVARIK CRAFTSMAN 478
 BD. 04/27/24 AAA. 21125433 TATTOO. 478

SITZ RESILIENT 10208
CONNEALY CRAFTSMAN
 BLACK CATHY OF CONANGA 8521

ANGUS SITZ RAINMAKER 11127
SITZ MANOR 3195
 SITZ MANOR 3462

SITZ STELLAR 726D
 SITZ MISS BURGESS 1856
 CONNEALY NIOBRARA 5451
 BLACK CARLA OF CONANGA 450

SITZ RAINMAKER 8075
 SITZ EMMA E 417L
 SITZ UPWARD 307R
 SITZ MANOR 1924

ACT. BW	100 (ET)
WW RATIO	ET
YW RATIO	ET
SCROTAL	39

CE	BW	WW	YW	MILK	MARB	REA
7	1.7	77	128	31	0.67	0.81
		30%		20%		

\$M	\$W	\$B	\$C
113	91	165	327
1%	10%		15%

Lot 50
KOVARIK CRAFTSMAN 472
 BD. 04/24/24 AAA. 21125432 TATTOO. 472

SITZ RESILIENT 10208
CONNEALY CRAFTSMAN
 BLACK CATHY OF CONANGA 8521

ANGUS SITZ RAINMAKER 11127
SITZ MANOR 3195
 SITZ MANOR 3462

SITZ STELLAR 726D
 SITZ MISS BURGESS 1856
 CONNEALY NIOBRARA 5451
 BLACK CARLA OF CONANGA 450

SITZ RAINMAKER 8075
 SITZ EMMA E 417L
 SITZ UPWARD 307R
 SITZ MANOR 1924

ACT. BW	94 (ET)
WW RATIO	ET
YW RATIO	ET
SCROTAL	38

CE	BW	WW	YW	MILK	MARB	REA
5	0.7	70	133	38	0.79	0.53
			30%	3%		

\$M	\$W	\$B	\$C
95	85	164	308
5%	15%		20%



SITZ MANOR 3195, Dam of 48-54

TWO-YEAR-OLD BULLS



CONNELY CRAFTSMAN, Sire of 48-54

Let 51 **KOVARIK CRAFTSMAN 481**
 BD. 04/29/24 AAA. 21122855 TATTOO. 481

SITZ RESILIENT 10208
CONNELY CRAFTSMAN
 BLACK CATHY OF CONANGA 8521

ANGUS SITZ STELLAR 726D
 SITZ MISS BURGESS 1856
 CONNEALY NIOBRARA 5451
 BLACK CARLA OF CONANGA 450

SITZ RAINMAKER 11127
SITZ MANOR 3195
 SITZ MANOR 3462

SITZ RAINMAKER 8075
 SITZ EMMA E 417L
 SITZ UPWARD 307R
 SITZ MANOR 1924

ACT. BW	78 (ET)
WW RATIO	ET
YW RATIO	ET
SCROTAL	35

CE	BW	WW	YW	MILK	MARB	REA
9	0.1	69	124	33	0.8	0.74
30%	25%			15%		

\$M	\$W	\$B	\$C
108	87	163	319
1%	10%		15%

Let 52 **KOVARIK CRAFTSMAN 490**
 BD. 05/05/24 AAA. 21122859 TATTOO. 490

SITZ RESILIENT 10208
CONNELY CRAFTSMAN
 BLACK CATHY OF CONANGA 8521

ANGUS SITZ STELLAR 726D
 SITZ MISS BURGESS 1856
 CONNEALY NIOBRARA 5451
 BLACK CARLA OF CONANGA 450

SITZ RAINMAKER 11127
SITZ MANOR 3195
 SITZ MANOR 3462

SITZ RAINMAKER 8075
 SITZ EMMA E 417L
 SITZ UPWARD 307R
 SITZ MANOR 1924

ACT. BW	99 (ET)
WW RATIO	ET
YW RATIO	ET
SCROTAL	37

CE	BW	WW	YW	MILK	MARB	REA
2	2.5	75	130	34	0.76	0.57
				10%		

\$M	\$W	\$B	\$C
98	85	169	317
4%	15%		20%

Let 53 **KOVARIK CRAFTSMAN 475**
 BD. 04/25/24 AAA. 21122854 TATTOO. 475

SITZ RESILIENT 10208
CONNELY CRAFTSMAN
 BLACK CATHY OF CONANGA 8521

ANGUS SITZ STELLAR 726D
 SITZ MISS BURGESS 1856
 CONNEALY NIOBRARA 5451
 BLACK CARLA OF CONANGA 450

SITZ RAINMAKER 11127
SITZ MANOR 3195
 SITZ MANOR 3462

SITZ RAINMAKER 8075
 SITZ EMMA E 417L
 SITZ UPWARD 307R
 SITZ MANOR 1924

ACT. BW	76 (ET)
WW RATIO	ET
YW RATIO	ET
SCROTAL	35

CE	BW	WW	YW	MILK	MARB	REA
10	0.1	74	134	38	0.81	0.66
20%	25%		30%	3%		

\$M	\$W	\$B	\$C
125	96	164	338
1%	3%		10%

Let 54 **KOVARIK CRAFTSMAN 458**
 BD. 04/21/24 AAA. 21122853 TATTOO. 458

SITZ RESILIENT 10208
CONNELY CRAFTSMAN
 BLACK CATHY OF CONANGA 8521

ANGUS SITZ STELLAR 726D
 SITZ MISS BURGESS 1856
 CONNEALY NIOBRARA 5451
 BLACK CARLA OF CONANGA 450

SITZ RAINMAKER 11127
SITZ MANOR 3195
 SITZ MANOR 3462

SITZ RAINMAKER 8075
 SITZ EMMA E 417L
 SITZ UPWARD 307R
 SITZ MANOR 1924

ACT. BW	78 (ET)
WW RATIO	ET
YW RATIO	ET
SCROTAL	38

CE	BW	WW	YW	MILK	MARB	REA
7	1.7	85	148	32	0.89	0.82
		15%	15%	15%		

\$M	\$W	\$B	\$C
88	96	190	334
15%	3%	20%	10%

Lot 55



BALDRIDGE FLAGSTONE F411, Grandsire of Lot 55



MARCYS ERICA 337, Maternal Granddam of Lot 55

Lot 55
KOVARIK FLAGSTONE 541
 BD. 03/03/25 AAA. 21377261 TATTOO. 541

BALDRIDGE FLAGSTONE F411
MARCYS FLAGSTONE 386
 M DIAMOND 20 EMMA E 400

ANGUS 33
 S A V RENOVATION 6822
MARCYS ERICA 2225
 MARCYS ERICA 337

HOOVER NO DOUBT
 BALDRIDGE ISABEL Y69
 U-2 COALITION 206C
 M DIAMOND EMMA E 396

S A V RENOWN 3439
 S A V MADAME PRIDE 0151
 SITZ UPWARD 307R
 MARCYS ERICA 393

ACT. BW
103
 WW RATIO
113

CE	BW	WW	YW	MILK	MARB	REA
-6	4.1	81	135	29	0.65	0.76
		20%	30%			
\$M	\$W	\$B	\$C			
88	79	160	296			
15%	25%		30%			

The yearling division is initiated by an intriguing herd sire prospect. This March born Flagstone son stems from the Marcys Erica cow family on the bottom side. His maternal granddam is a full sister to Marcys Scale Crusher. Lot 55 is a stout built, soft centered bull, who will add dimension and pay weight to a calf crop.

YEARLING BULLS

Lot 56



LT CHIEFTON 1440, Sire of Lots 56-62

Lot 56
KOVARIK RINGO 520
 BD. 02/19/25 AAA. 21308577 TATTOO. 520

KOUPALS B&B PATHFINDER 8106
LT CHIEFTON 1440
 LT FOREVER LADY 7038

ANGUS 33
 LT CONVERSE 8011
KOVARIK BLACKCAP BESSIE 004
 KOVARIK BLACKCAP BESSIE 832

LT ENTERPRISE 5213
 B&B BLK&D PROGRESS 3015
 S FOUNDATION 514
 LT FOREVER LADY 5360

CONNEALY CONFIDENCE PLUS
 LT NORDICA 6066
 MCCONNELL ALTITUDE 3114
 LT BLACKCAP BESSIE 0141

ACT. BW	87
WW RATIO	111

CE	BW	WW	YW	MILK	MARB	REA
10	0.2	81	130	22	0.27	0.58
20%	30%	20%				
\$M	\$W	\$B	SC			
76	78	134	250			
30%	25%					

The next group of bulls are sired by LT Chiefton 1440. The dam of lot 56 is an LT Converse daughter out of the Blackcap Bessie cow family. This is a big spread bull, that offers plenty of eye appeal and performance. A maternal brother sold in the 2024 sale to Mark Wray, Ord, NE.

YEARLING BULLS



Lot 57

Lot 57
KOVARIK CHIEFTON 539
 BD. 02/27/25 AAA. 21308595 TATTOO. 539

KOUPALS B&B PATHFINDER 8106
LT CHIEFTON 1440
 LT FOREVER LADY 7038

ANGUS
 U-2 COALITION 206C
MARCYS ERICA 262
 MARCYS ERICA 046

LT ENTERPRISE 5213
 B&B BLK&D PROGRESS 3015
 S FOUNDATION 514
 LT FOREVER LADY 5360

HF SYNDICATE 213Z
 U2 ERELITE 109Z
 LUSCO NO QUESTION 802
 MARCYS ERICA 840

CE	BW	WW	YW	MILK	MARB	REA
2	2.5	82 20%	138 25%	20	0.65	0.22

\$M	\$W	\$B	\$C
55	68	140	237

ACT. BW 101
 WW RATIO 114

Here is a high performance Chiefton son, again out of the Erica cow family. This bull ranks in the top 20% of the breed for WW and 25% for YW. This is a very good cow bull that should continue to impress you as he matures.



Lot 58
KOVARIK CHIEFTON 537
 BD. 02/25/25 AAA. 21308593 TATTOO. 537

KOUPALS B&B PATHFINDER 8106
LT CHIEFTON 1440
 LT FOREVER LADY 7038

ANGUS
 LBDR 2114 FACTOR
LBDR LADY 5733-2114ORF
 SDCC LADY 65S

LT ENTERPRISE 5213
 B&B BLK&D PROGRESS 3015
 S FOUNDATION 514
 LT FOREVER LADY 5360

VIN-MAR O'REILLY FACTOR
 LBDR ANN 0735 FRE
 C A FUTURE DIRECTION 5321
 IDEAL 7405 OF 1418 3451

CE	BW	WW	YW	MILK	MARB	REA
2	2.5	67	120	32 15%	0.52	0.42

\$M	\$W	\$B	\$C
49	68	135	224

ACT. BW 104
 WW RATIO 108

Lot 58 is one of a pair of bulls out of Lazy Black Diamond bred cows, I really like both of them. This bull is powerfully constructed with plenty of dimension and eye appeal. This is a quality Chiefton son.

DVAuction
 Broadcasting Real-Time Auctions

Never Miss An Auction Again!
 Watch & Bid online for FREE!

Visit www.DVAuction.com
 and Register Today!

For General Questions Please Contact Our Office:
 (402) 316-5460 or support@dvauction.com

Lot 59
KOVARIK CHIEFTON 536
 BD. 02/25/25 AAA. 21308592 TATTOO. 536

KOUPALS B&B PATHFINDER 8106
LT CHIEFTON 1440
 LT FOREVER LADY 7038

ANGUS
 KOVARIK SCALE CRUSHER 721
KOVARIK BLACKCAP BELLE 191
 KOVARIK BLACKCAP BELLE 800

LT ENTERPRISE 5213
 B&B BLK&D PROGRESS 3015
 S FOUNDATION 514
 LT FOREVER LADY 5360

MARCYS SCALE CRUSHER
 MARCYS ERICA 850
 S A V RENOWN 3439
 IMC BLACKCAP BELLE 0299

CE	BW	WW	YW	MILK	MARB	REA
5	2.3	74	129	21	0.31	0.68

\$M	\$W	\$B	\$C
85 15%	65	130	254

ACT. BW 96
 WW RATIO 105

A very complete, well-built bull that is out of a Scale Crusher granddaughter. Plenty of length of spine and body depth in this prospect.

YEARLING BULLS

Lot
60

KOVARIK CHIEFTON 540

BD. 02/27/25 AAA. 21308596 TATTOO. 540

KOUPALS B&B PATHFINDER 8106
LT CHIEFTON 1440
LT FOREVER LADY 7038

LT ENTERPRISE 5213
B&B BLKBD PROGRESS 3015
S FOUNDATION 514
LT FOREVER LADY 5360

ACT. BW
107
WW RATIO
108

ANGUS
O C C UNMISTAKABLE 946U
MISS WIX 6127 OF MC CUMBER
MISS WIX 4128 OF MC CUMBER

O C C PAXTON 730P
FCC REVOLUTION ROSE 2476
MC CUMBER FORTUNATE 248
MISS WIX 928 OF MC CUMBER

CE	BW	WW	YW	MILK	MARB	REA
1	3.2	75	128	21	0.64	0.34
\$M	\$W	\$B	\$C			
85	65	124	246			
15%						

This is a high quality bull out of a proven cow. His dam, Miss Wix 6127 of McCumber produced bulls that sold in both the 2024 and 2025 sales. This is a high growth prospect that should add pay weight to your calf crop without sacrificing maternal value.



Maternal Brother to Lot 60

Lot
61

KOVARIK CHIEFTON 525

BD. 02/20/25 AAA. 21308582 TATTOO. 525

KOUPALS B&B PATHFINDER 8106
LT CHIEFTON 1440
LT FOREVER LADY 7038

LT ENTERPRISE 5213
B&B BLKBD PROGRESS 3015
S FOUNDATION 514
LT FOREVER LADY 5360

ACT. BW
87
WW RATIO
109

ANGUS
ELLINGSON PROFOUND 8155
KOVARIK ELITE LADY 234
LT ELITE LADY 9102

S POWERPOINT WS 5503
EA ROSETTA 6157
TC ABERDEEN 759
LT ELITE LADY 3135

CE	BW	WW	YW	MILK	MARB	REA
-2	2.7	92	156	16	0.68	0.58
		4%	10%			
\$M	\$W	\$B	\$C			
89	76	159	295			
10%	30%		30%			

Make sure to check out this bull ahead of the sale. Top 4% WW & 10% YW EPDs in tandem with breed leading management traits and \$ Figures. This is a good structured bull with plenty of red meat.



Lot
62

KOVARIK CHIEFTON 534

BD. 02/25/25 AAA. 21308590 TATTOO. 534

KOUPALS B&B PATHFINDER 8106
LT CHIEFTON 1440
LT FOREVER LADY 7038

LT ENTERPRISE 5213
B&B BLKBD PROGRESS 3015
S FOUNDATION 514
LT FOREVER LADY 5360

ACT. BW
107
WW RATIO
102

ANGUS
IRON MTN BOULDER DAM C021
KOVARIK AMANDA 851
IRON MTN AMANDA B150

HOOVER DAM
IRON MTN QUEEN MOTHER 3069
SA V RESOURCE 1441
SA V AMANDA 1064

CE	BW	WW	YW	MILK	MARB	REA
1	3.5	76	138	13	0.02	0.62
		30%	25%			
\$M	\$W	\$B	\$C			
54	47	118	207			

When I previewed the offering ahead of building the catalog, I really liked this bull. He is a maternal brother to Kovarik Blackcap 018, the dam of the lead flush of Chiefton sons. This bull has the pedigree to be a good producer.



KOVARIK BLACKCAP 018, Maternal Sister to Lot 62



Lot 63

Lot 63

KOVARIK RESOURCE 500

BD. 02/06/25 AAA. 21333979 TATTOO. 500

RITO 707 OF IDEAL 3407 7075
SA V RESOURCE 1441
 S A V BLACKCAP MAY 4136

ANGUS **SS**

MARCYS SCALE BREAKER N PLUS
MARCYS ERICA 8115
 MARCYS ERICA 491

R R RITO 707
 IDEAL 3407 OF 1418 076
 S A V 8180 TRAVELER 004
 S A V MAY 2397

MARCYS SCALE CRUSHER
 MARCYS TREASURE 227
 CONNEALY PACKER 547
 MARCYS ERICA 866

ACT. BW
96
 WW RATIO
106

CE	BW	WW	YW	MILK	MARB	REA
-1	3.4	75	139 25%	23	0.12	0.81
SM	\$W	\$B	SC			
49	61	137	227			



GENEX

SAV RESOURCE 1441, Sire of Lot 63

Lot 63 was bought in dam from the Marcy Angus Mature Cow Herd Dispersal. This direct son of the breed legend, SAV Resource 1441, is a very good bull that offers plenty of performance and stretch. Note his advanced growth EPD's.

Lot 64

We are extremely excited for the future of LT Talent 3012 and are proud to offer his first set of sons to the public. Talent did everything we needed him to do in terms of calving ease, performance, and projected maternal strength. The lead bull in this sire group represents the production ability of Talent very well. He blends calving ease, growth, and management traits to the highest degree. A maternal brother to this bull sold to Dan Gisslebeck, Arlington, SD in last year's sale.



Lot 65

This Talent son is very complete in terms of his build with extra spring of rib and dimension. His dam goes back to Scale Crusher and the Erica cow family. He is in the top 25% of the breed for \$M and top 20% for \$W.



Lot 64 **KOVARIK TALENT 517**
 BD. 02/18/25 AAA. 21308574 TATTOO. 517

TEHAMA TESTAMENT
LT TALENT 3012
 LT LADY NUGGET 0154

ANGUS S A V PRESIDENT 6847
E D ERICA 032 OF 910
 E D ERICA 910

TEHAMA PATRIARCH F028
 TEHAMA MARY BLACKBIRD E789
 LT CONVERSE 8011
 LT LADY NUGGET 7092

COLEMAN CHARLO 0256
 S A V BLACKCAP MAY 4136
 B C MATRUX 4132
 E D ERICA 515

ACT. BW 91
 WW RATIO 98

CE	BW	WW	YW	MILK	MARB	REA
12	-0.2	76	126	29	0.77	0.38
10%	20%	30%		30%		
\$M	\$W	\$B	\$C			
82	86	137	260			
20%	15%					

Lot 65 **KOVARIK TALENT 522**
 BD. 02/19/25 AAA. 21308579 TATTOO. 522

TEHAMA TESTAMENT
LT TALENT 3012
 LT LADY NUGGET 0154

ANGUS MARCYS N PLUS RELOADED
MARCYS ERICA 2200
 MARCYS ERICA 871

TEHAMA PATRIARCH F028
 TEHAMA MARY BLACKBIRD E789
 LT CONVERSE 8011
 LT LADY NUGGET 7092

MARCYS SCALE CRUSHER
 MARCYS TREASURE 227
 LISCO NO QUESTION 802
 MARCYS ERICA 618

ACT. BW 88
 WW RATIO 110

CE	BW	WW	YW	MILK	MARB	REA
9	1.9	78	127	28	0.28	0.75
30%		25%				
\$M	\$W	\$B	\$C			
78	81	118	231			
25%	20%					



LT TALENT 3012, Sire of Lots 64-73

Lot 66 **KOVARIK TALENT 512**
 BD. 02/17/25 AAA. 21308569 TATTOO. 512

TEHAMA TESTAMENT
LT TALENT 3012
 LT LADY NUGGET 0154
ANGUS
 CONNEALY CONFIDENCE PLUS
LT ETHENA 8068
 LT ETHENA 6112

TEHAMA PATRIARCH F028
 TEHAMA MARY BLACKBIRD E789
 LT CONVERSE 8011
 LT LADY NUGGET 7092

CONNEALY CONFIDENCE 0100
 ELBANNA OF CONANGA 1209
 KOUPALS B&B TITAN 3013
 LT ETHENA 2195

ACT. BW
93
 WW RATIO
95

CE	BW	WW	YW	MILK	MARB	REA
4	2	70	119	28	0.67	0.66

\$M	\$W	\$B	\$C
96	75	136	272
5%	30%		

A well built Talent son out of LT Ethena 8068, the donor dam of lots 28-32. You will appreciate his structural integrity, alongside his body depth and eye appeal.

Lot 67 **KOVARIK TALENT 514**
 BD. 02/17/25 AAA. 21308571 TATTOO. 514

TEHAMA TESTAMENT
LT TALENT 3012
 LT LADY NUGGET 0154
ANGUS
 S A V CHECKMATE 8158
KOVARIK BLACKCAP BESSIE 204
 KOVARIK BLACKCAP BESSIE 841

TEHAMA PATRIARCH F028
 TEHAMA MARY BLACKBIRD E789
 LT CONVERSE 8011
 LT LADY NUGGET 7092

COLEMAN CHARLO 0256
 S A V EMBLYNETTE 6506
 V D A R SONNY BOY 1194
 LT BLACKCAP BESSIE 0141

ACT. BW
78
 WW RATIO
110

CE	BW	WW	YW	MILK	MARB	REA
12	-1.9	54	98	37	0.62	0.61
10%	4%			3%		

\$M	\$W	\$B	\$C
73	70	119	227

Lot 67 is a heifer bull prospect with a keen head, and a good look from the side. His dam is a daughter of SAV Checkmate, these bulls were very popular in our 2024 sale.

Lot 68 **KOVARIK TALENT 528**
 BD. 02/22/25 AAA. 21308585 TATTOO. 528

TEHAMA TESTAMENT
LT TALENT 3012
 LT LADY NUGGET 0154
ANGUS
 TC FORTHRIGHT 333
LBDR PRIDE 6744 TC333
 LBDR PRIDE 4715-2102P

TEHAMA PATRIARCH F028
 TEHAMA MARY BLACKBIRD E789
 LT CONVERSE 8011
 LT LADY NUGGET 7092

TC FORTHRIGHT 9284
 TC PRIDE 6180
 LBDR 2102-9008 PIONEER
 LBDR PRIDE 2823 SC

ACT. BW
82
 WW RATIO
95

CE	BW	WW	YW	MILK	MARB	REA
10	-0.5	61	109	33	0.61	0.54
20%	20%			15%		

\$M	\$W	\$B	\$C
72	73	128	238

Another bull out of a Lazy Black Diamond cow, this time a heifer bull candidate. I had this bull marked as a very complete individual with added depth of rib.

Lot 69 **KOVARIK TALENT 504**
 BD. 02/15/25 AAA. 21308561 TATTOO. 504

TEHAMA TESTAMENT
LT TALENT 3012
 LT LADY NUGGET 0154
ANGUS
 SITZ STELLAR 726D
KOVARIK AMANDA 221
 IRON MTN AMANDA B150

TEHAMA PATRIARCH F028
 TEHAMA MARY BLACKBIRD E789
 LT CONVERSE 8011
 LT LADY NUGGET 7092

MOHLEN SUBSTANTIAL 272
 SITZ PRIDE 2008
 S A V RESOURCE 1441
 S A V AMANDA 1064

ACT. BW
76
 WW RATIO
95

CE	BW	WW	YW	MILK	MARB	REA
6	0.6	72	126	26	0.94	0.65

\$M	\$W	\$B	\$C
106	78	156	308
2%	25%		20%

Lot 69 is out of a first calf dam, sired by Sitz Stellar. We really like those females in production and feel that this bull will leave a good set of daughters behind. Note this bulls top 1% \$M.

YEARLING BULLS

Lot 70 **KOVARIK TALENT 532**
 BD. 02/23/25 AAA. 21308588 TATTOO. 532

TEHAMA TESTAMENT
LT TALENT 3012
 LT LADY NUGGET 0154

ANGUS **BASIN RAINMAKER 4404**
KOVARIK QUEEN MARIE 028
 IRON MTN QUEEN MARIE B324

TEHAMA PATRIARCH F028
 TEHAMA MARY BLACKBIRD E789
 LT CONVERSE 8011
 LT LADY NUGGET 7092

BASIN RAINMAKER 2704
 BASIN JOY 1036
 S A V BOSTON 9332
 IMC QUEEN MARIE 9057

ACT. BW **88**
 WW RATIO **95**

CE	BW	WW	YW	MILK	MARB	REA
10	-0.6	62	113	34	0.76	0.66
20%	15%			10%		
\$M	\$W	\$B	\$C			
93	73	155	294			
10%			30%			

Another heifer bull prospect that I have marked well. The dam of this bull is sired by Basin Rainmaker 4404, a proven female producer.

Lot 71 **KOVARIK TALENT 535**
 BD. 02/25/25 AAA. 21308591 TATTOO. 535

TEHAMA TESTAMENT
LT TALENT 3012
 LT LADY NUGGET 0154

ANGUS **MARCYS FULL BORE 015**
MARCYS ERICA 2178
 MARCYS ERICA 920

TEHAMA PATRIARCH F028
 TEHAMA MARY BLACKBIRD E789
 LT CONVERSE 8011
 LT LADY NUGGET 7092

BURS SOUTHERN CHARM AA31
 MARCYS ERICA 337
 LISCO NO QUESTION 802
 MARCYS ERICA 7183

ACT. BW **86**
 WW RATIO **90**

CE	BW	WW	YW	MILK	MARB	REA
4	2	65	109	41	0.75	0.57
				1%		
\$M	\$W	\$B	\$C			
69	80	121	226			
	20%					

A well balanced bull that is good structured, and offers plenty of rib depth, and length of spine. This bull is worth a look on sale day if you want a no-holes herd sire prospect.

Lot 72 **KOVARIK TALENT 538**
 BD. 02/25/25 AAA. 21308594 TATTOO. 538

TEHAMA TESTAMENT
LT TALENT 3012
 LT LADY NUGGET 0154

ANGUS **HA PRIME CUT 4493**
E D PRIDE 035
 E D PRIDE 916

TEHAMA PATRIARCH F028
 TEHAMA MARY BLACKBIRD E789
 LT CONVERSE 8011
 LT LADY NUGGET 7092

VERMILION SIRLOIN
 HA MISS BLACKCAP 9127
 SIMONSON MAIN EVENT 8427
 MARCYS 98 PRIDE 89-8

ACT. BW **92**
 WW RATIO **97**

CE	BW	WW	YW	MILK	MARB	REA
10	-0.3	69	113	37	1.01	0.29
20%	20%			3%	30%	
\$M	\$W	\$B	\$C			
72	88	151	268			
	10%					

Lot 72 is a calving ease prospect out of an outcross cow. Use this bull to add a different twist to your breeding program. He boasts a top 30% MARB EPD as a bonus.

Lot 73 **KOVARIK TALENT 518**
 BD. 02/19/25 AAA. 21308575 TATTOO. 518

TEHAMA TESTAMENT
LT TALENT 3012
 LT LADY NUGGET 0154

ANGUS **CONNEALY KILROY**
KOVARIK FOREVER LADY 166
 LT FOREVER LADY 7286

TEHAMA PATRIARCH F028
 TEHAMA MARY BLACKBIRD E789
 LT CONVERSE 8011
 LT LADY NUGGET 7092

BASIN PAYWEIGHT 1682
 ELBANNA OF CONANGA 1209
 K C F BENNETT TOTAL
 LT FOREVER LADY 9277 ET

ACT. BW **78**
 WW RATIO **92**

CE	BW	WW	YW	MILK	MARB	REA
9	-1.6	60	105	38	0.7	0.89
30%	10%			3%		30%
\$M	\$W	\$B	\$C			
62	78	154	262			
	25%					

Nearly a double digit CE EPD in tandem with a negative BW and an actual birthweight of 78 lbs. indicates that this is a calving ease prospect. His dam is a daughter of LT Forever Lady 7286.

Lot 74 **KOVARIK CERTIFIED 542**
 BD. 03/04/25 AAA. 21377262 TATTOO. 542

S A V CERTIFIED 0849
BLUFFSIDE CERTIFIED 205
 OX BOW MANOR 451

ANGUS **MARCYS SOUTHERN CHARM 1186**
MARCYS ETHELDA 3195
 MARCYS ETHELDA 923

MARCYS SCALE CRUSHER
 S A V BLACKCAP MAY 1420
 S A V FINAL ANSWER 0035
 OX BOW MANOR 327

MARCYS SOUTHERN CHARM 999
 MARCYS ERICA 8159
 HA PRIME CUT 4493
 MARCYS ETHELDA 7132

ACT. BW **85**
 WW RATIO **102**

CE	BW	WW	YW	MILK	MARB	REA
9	2	70	119	21	0.01	0.72
30%						
\$M	\$W	\$B	\$C			
37	59	103	171			

This March born bull is out of a first calf dam purchased from the Marcy Dispersal. He has a modest birthweight and over 600 lbs. of weaning growth.

Lot 75 **KOVARIK RENOVATION 529**
 BD. 02/22/25 AAA. 21377260 TATTOO. 529

S A V RENOVATION 6822
BLUFFSIDE RENOVATION 308
 MARCYS PRIDE 487

ANGUS **WXW TIMBERLINE W287**
MARCYS ERICA 329
 MARCYS ERICA 578

S A V RENOWN 3439
 S A V MADAME PRIDE 0151
 MARCYS 09 SLEDGEHAMMER 103-9
 MARCYS PRIDE 69

CONNEALY REGULATOR
 WYV MISS WIX LASS 063A8 N14
 MARCYS SCALE CRUSHER
 MARCYS ERICA 6124

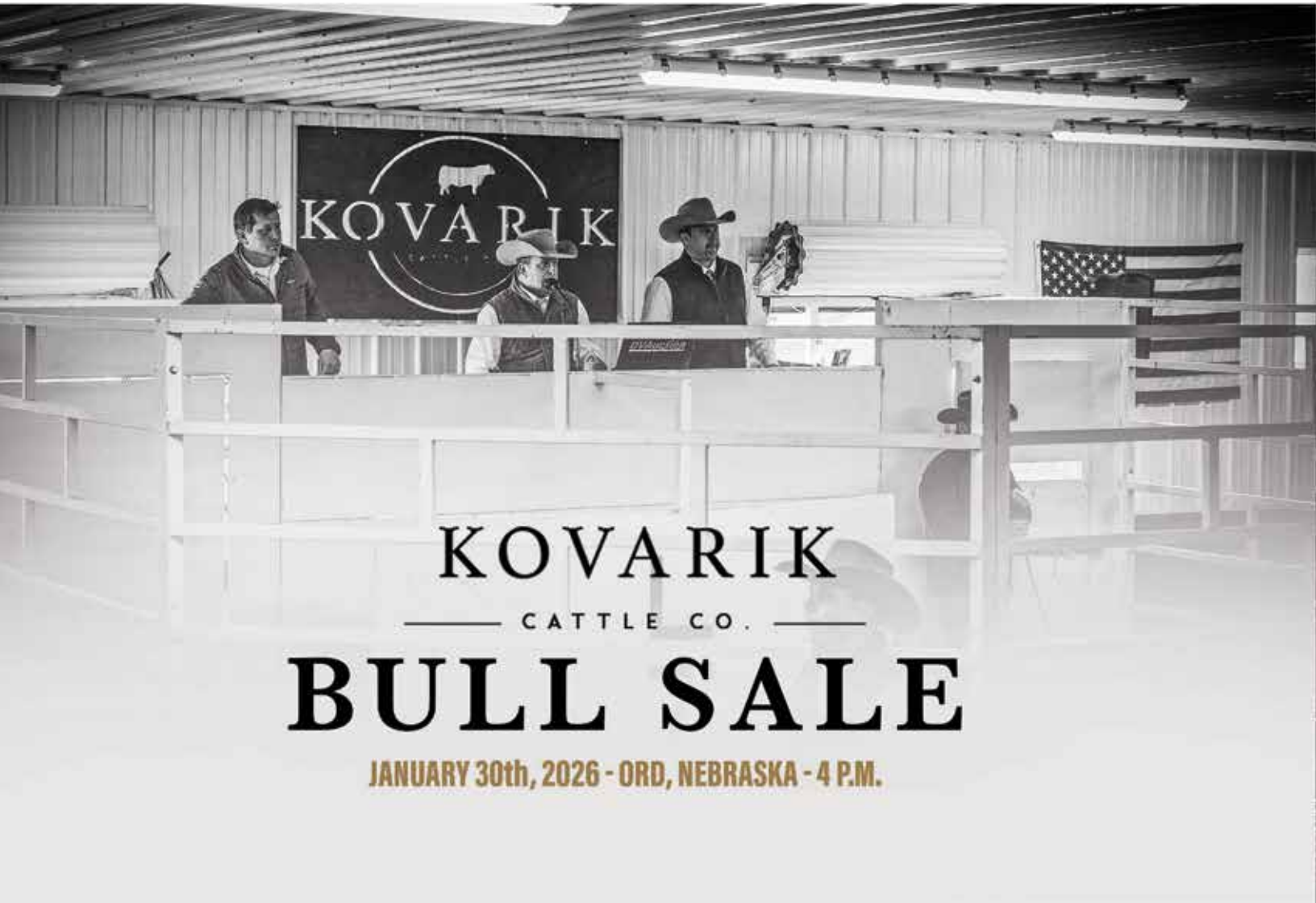
ACT. BW **63**
 WW RATIO **92**

CE	BW	WW	YW	MILK	MARB	REA
15	-1.8	51	98	20	0.42	0.32
3%	5%					
\$M	\$W	\$B	\$C			
74	40	127	239			

A sleep all night heifer bull prospect that should be low maintenance come calving time. Another bull bought in dam out of a first calf heifer from the Marcy Dispersal.



5520 NW TIMBER EDGE DR.
TOPEKA, KS 66618



KOVARIK
— CATTLE CO. —
BULL SALE
JANUARY 30th, 2026 - ORD, NEBRASKA - 4 P.M.