



CONLEY ANGUS SPECIAL BULL SALE

Friday April 4, 2025 ■ 1 PM CST



SALE LOCATION

Conley Angus
5119 Hwy. 6
Clarksdale, MO 64430

DVAuction
Broadcasting Real-Time Auctions
Visit www.DVAuction.com

SALE SCHEDULE

FRIDAY, APRIL 4, 2025

Cattle will be on display at the sale facility,

NOON - Complimentary lunch

1:00 PM - SALE



SALE INFORMATION

GUARANTEE

All bulls are guaranteed to be sound breeders, If a bull is determined to not be a sound breeder, the buyer will have a credit of the purchase price in a future sale.

•Conley Angus is selling full possession and 1/2 semen interest in all the bulls.

LIABILITY

All persons who attend the sale do so at their own risk, legal or otherwise, for their safety or for behavior of the animals. The owners and sale service assume no liability for property loss or any accident that may occur.

SALE DAY SUPPLEMENT

See sale day supplement for updates and special announcements.

HERD HEALTH

All cattle will be accompanied by proper health certificate for immediate shipment.

TRUCKING

Truckers believed to be reliable will be available to assist in shipping your purchases.

LIVESTOCK MORTAITY INSURANCE

To properly insure your investment,

SALE DAY TELEPHONES

Trey Conley.....(816) 284-1202

Donna Conley.....(816) 248-5533

Lucas Northcutt.....(405) 416-3111

Lane Howe.....(918) 910-1373

Jeremy Haag.....(406) 833-0117

Mitchell Armitage....(405) 641-9438

Mary Lee White.....(541) 589-1476

Terry Cotton.....(816) 390-3227

Pete Masters.....(403)-391-1604

Dusty Jones.....(816)-752-5967

Red Angus Cows

Lee Holtmeier.....(785) 747-7007

Alec Tiemeyer.....(785) 541-0608

Charolais Cows

Brett Sayre.....(573) 881-1876

AUCTIONEER:

Jered Shipman.....(806) 983-7226

DVAuction

Broadcasting Real-Time Auctions

Visit www.DVAuction.com

- Register to bid at least 24 hours prior to the auction. (404) 316-5460 or e-mail dva@dvauction.com for pre-sale bidding approval.

VIEW SALE VIDEOS at DVAuction



and volumes of success stories... The Conley name is established, well known, and deeply respected.



—For decades Conley Angus has been breeding good functional common sense Angus cattle, Conley Angus bulls have been put to the test, all around globe crossed with other breeds, endured harsh conditions and enjoyed many years of service for our loyal customers and more importantly, valued friends!



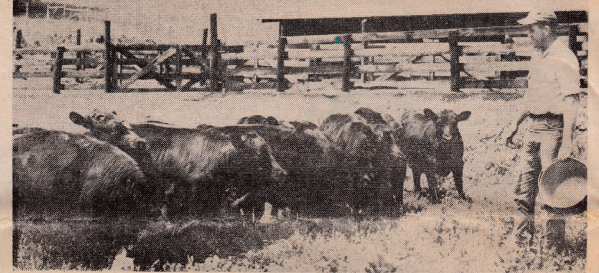
—Conley Angus started in the late 1940's shortly after the end of WWII. Bill Sr. dedicated his life to maintaining a tight knit closed female herd that was located on Gibbet Hill, Groton, Massachusetts, hence "Gibbet Hill Farm" do to the population surge on the east coast Bill Conley Sr. and his son Bill Conley purchased land in Northwest Missouri, located just east of the American Angus Association headquarters, St. Joseph, MO (where Bill Sr. served on the board of directors for 6 years and as President in 1985).

78 YEARS of Angus

BC CONLEY ANGUS



1947-2025



A New Crop of Heifers

Bill Conley, manager of the Gibbet Hill Farms in Groton, is shown above with 14 young heifers that will soon be ready for the show life that is part of the farms' method of marketing breeding stock.

Groton Has One of Largest Cattle Breeding Ranches in New England

This is the first of two articles on the Gibbet Hill farms in Groton, one of the largest beef cattle spreads in New England.

By Gerard Vincent
GROTON—The thought of a cattle ranch in the heart of New England would strike many persons as both strange and not in keeping with the normal concept of the old Yankee farmer or the new industrial push. But Mrs. Malcolm Strachan of Groton has what is considered one of the largest Angus cattle farms in the northeastern states.

Operating this farm for her is Bill Conley, a graduate of the University of Connecticut and manager of the Gibbet Hill farm for the past 10 years.

Hill is an example of the type of foreman that is being sought for these eastern cattle spreads. The college background emphasizes the new trends in that business and the new possibilities for the wasting New England countryside.

"The type of cattle that is becoming so popular here is the Aberdeen Angus," said Conley. "It has the better and more beef than any other type of cattle being raised for beef." This mild type of cattle means a cowboy is able to do his herding and farmhand used to be able to do, as well as in the area of providing the combination that will fatten them out.

"OUR AIMS at Gibbet Hill are to produce a high quality beef, to maintain a top breeding herd, and to provide a source of income for the family."

care method of breeding beef cattle. "The Aberdeen Angus cow that we feature is a Scottish import, very popular because it is hardy, naturally hornless, has a higher dressing percentage and constantly brings a premium price on the major terminal markets."

"The quality of the meat is unsurpassed because of the internal marbling of fat. This means less outside fat and less waste for the housewife."

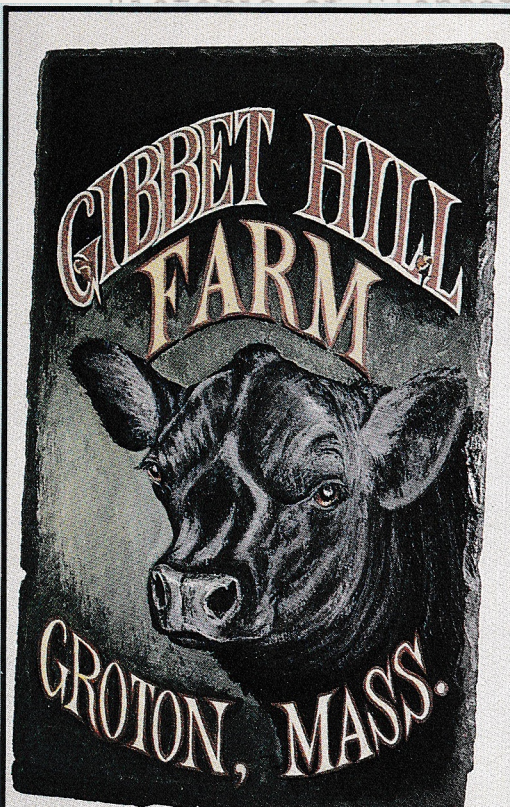
"SINCE ITS introduction to this country right after the Civil War, it has been the fastest growing beef breed. Today, there are more persons registering it than any other."

"As far as New England goes Gibbet Hill farm is a large operation. The size of the herds vary considerably since we are constantly trying to sell as many as we can while at the same time maintaining a top breeding herd."

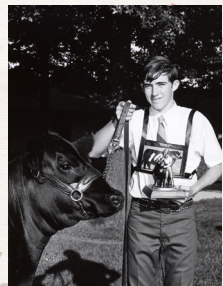
"We jointly own an international champion, T. T. Ellemere 500, 1566 International Reserve Grand Champion, at Tolin farms in Illinois, and Dor-Mac's 156th, last four International Champion."

from him through the use of to us. include Quality Bardolli III, Chicago in 1931, and Dor-Mac's 156th, last four International Champion. ing from bulls is the most practical breeding stock, and we find from the aspect of working from the prizes that they may

It take in detail some of the try on such a spread and the per must have to run his place



National Western Reserve Grand Champs



ABERDEEN ANGUS RAILWAY

Name of Animal.....

Signature of S.....

ABERDEEN

Name of Animal.....

Signature of Shipp.....

ABERDEEN ANG

Name of Animal.....

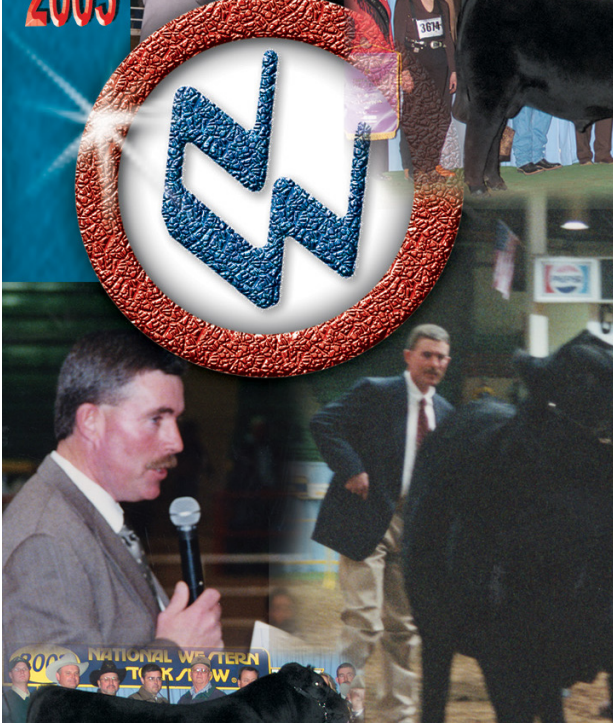
SHIPPING VOUCHER No. 1

Record 10.....

Angus history
Hang on to these
please — father

—Bill Conley “BC” was born and raised on Gibbet Hill Farm, in his lifetime he never wavered from the integrity of breeding sound functional Angus cattle balancing phenotype and pedigree. Bill has left two remarkable sons, Kyle Conley of Sulphur, OK, and Trey Conley of Clarksdale, MO, each has inherited the passion for raising cattle that are unique and unparalleled in quality.



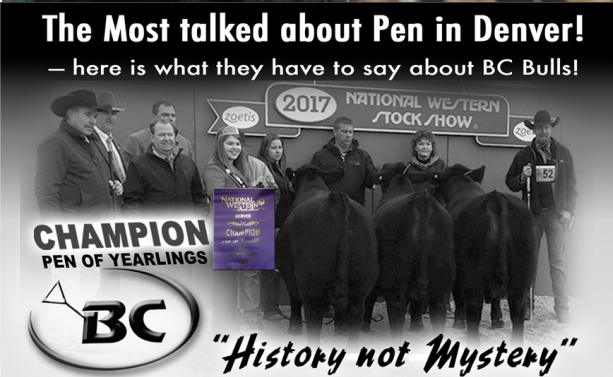


A Rich History of Angus- Family- Friends-

When people think of Bill Conley, they see a friend, they see a man who always had the time to talk to them, it didn't matter if you were well-known or unknown. I consider myself lucky to have know Dad well enough to understand the way he operated, he raised cattle with integrity, pedigree, structure and longevity. Dad never wavered in the kind of cattle he liked or raised. Conley Angus cows have lived through many different eras of the Angus breed, and on Friday, April 4th, we are offering a very select set of Angus bulls that Dad strongly believed in, bulls that I believe have the capacity to have a significant, positive impact in the Angus breed for years to come.

We look forward to seeing you on Friday, April 4th!
-or check out the link on DVAuction.com

—Trey Conley





BC ROBUST 0807

Reg. #18456252

- BC Robust has an excellent reputation for consistently siring offspring that excel in natural muscle shape, powerful feet, and leg structure; females with an abundance of milk and absolute tremendously productive cows that excel in natural spring of rib and, most importantly, breeding back ahead of time.

- Our oldest Robust daughters are on their fifth and sixth calves now, and one of our favorite Robust daughters, “990” is the dam of BC Ivy League 9903, who sells in this offering as Lot 8.

- We are pleased to see the success Robust has brought to those who have used him in their breeding programs and more excited for the future success these bulls we are offering will bring for generations.

- Robust was our lead-off bull in our champion pen of three, at the NWSS. He was also “at the side of his” mother at the NJAS as champion bred and owned mature cow (she was a six year old), the same year, (her mother as an eight year old) was crowned champion mature cow in the owned division. Robust’s great grandmother by BC Matrix 4132, ratioed over 102 on 14 calves in her 17 years of production.

Semen only -LOTS A1, A2, A3, A4

The Most talked about Pen in Denver!
— here is what they have to say about BC Bulls!

CHAMPION PEN OF YEARLINGS

BC

“History not Mystery”



1

BC CONLEY BLACKBOX 2931

#20350274

• 10-19-2021

BC ROBUST 0807

BC SURVEYOR 680D

BC 327-8 CP BELLE 0-807

N BAR EMULATION EXT

DOUBLE R BAR PURE PRIDE Z193

BC 327 PURE PRIDE 092

Actual BW 82 WW 908 YW 1590

BC Eagle Eye 110-7

BC Prides Lass 4132-680

BC Pure Pride 327-8

BC 607 Belle 807

EMULATION N BAR 5522

N BAR PRIMROSE 2424

SAV 8180 TRAVELER 004

BC 110 PURE PRIDE 327

- We are going to lead off with the most impressive powerful long bodied, huge topped, wide pined, and super athletic son of BC Robust 0807.

- BC Conley Blackbox has the potential to sire structurally phenomenal replacement females, that will combine maternal excellence with fleshing ability.

- The dam of Blackbox is true to the superior maternal strengths of EXT, backed by generations of the time -tested and proven Conley Angus Pure Pride family.

- Acquiring walking rights on a proven bull with a stacked pedigree of this caliber and structural presence is a rare opportunity.

- Today is a special day for serious bull buyers!

- Selling full possession, 1/2 semen interest.





2

BC EMERGENCE 806-3

#21184089 • 03-20-2023

OCC LEGEND 616L
BC LOOKOUT 7024
 GIBBET HILL MIGNONNE E37
 BC CERTIFIED 413-1
BC 942 E BELLE 806
 BC 405 E BELLE EXODUS 942
 Actual BW 78 WW 785 YW 1250

OCC EMBLAZON 854E
 OCC BLACKBIRD 632J
 PAPA EQUATOR 2928
 GIBBET HILL MIGNONNE TR 29
 OCC PAXTON 730P
 CAF PURE PRIDE EXT 99
 OCC EXODUS 712E
 CAF E BELLE 259

- This bull is a real treasure, being an own son of the world famous BC LOOKOUT 7024! For over 21 years BC Lookout 7024 has never lost popularity amongst great breeders. *"History not Mystery"*.
- He is a stout, easy-fleshing and athletic bull with eye-appeal and style who offers tremendous maternal traits combined with incredible structure from the ground up.
- From the historical Belle of Malden cow family, the Belle line of females have been prominent contributors on a large scale, Robust also comes from the Belle family. E Belle 259 was the 259th daughter descending from the original Belle of Malden from 1947.
- Selling full possession, 1/2 semen interest.

LOOKOUT



• **BC LOOKOUT 7024**
 - sire of Lot 2

• BC Lookout 7024 shows up in the back of many great cattle of all breeds.

• **Time Tested and Proven!**



3

BC BLUEPRINT 592-3

#20887242

• 02-20-2023

BC ROBUST 0807

BC SURVEYOR 680D

BC 327-8 CP BELLE 0-807

BC CERTIFIED 413-1

BC 092 PURE PRIDE 592

BC 327 PURE PRIDE 092

Actual BW 79 WW 850 YW 1350

BC Eagle Eye 110-7

BC Prides Lass 4132-680

BC Pure Pride 327-8

BC 607 Belle 807

OCC PAXTON 730P

CAF PURE PRIDE EXT 99

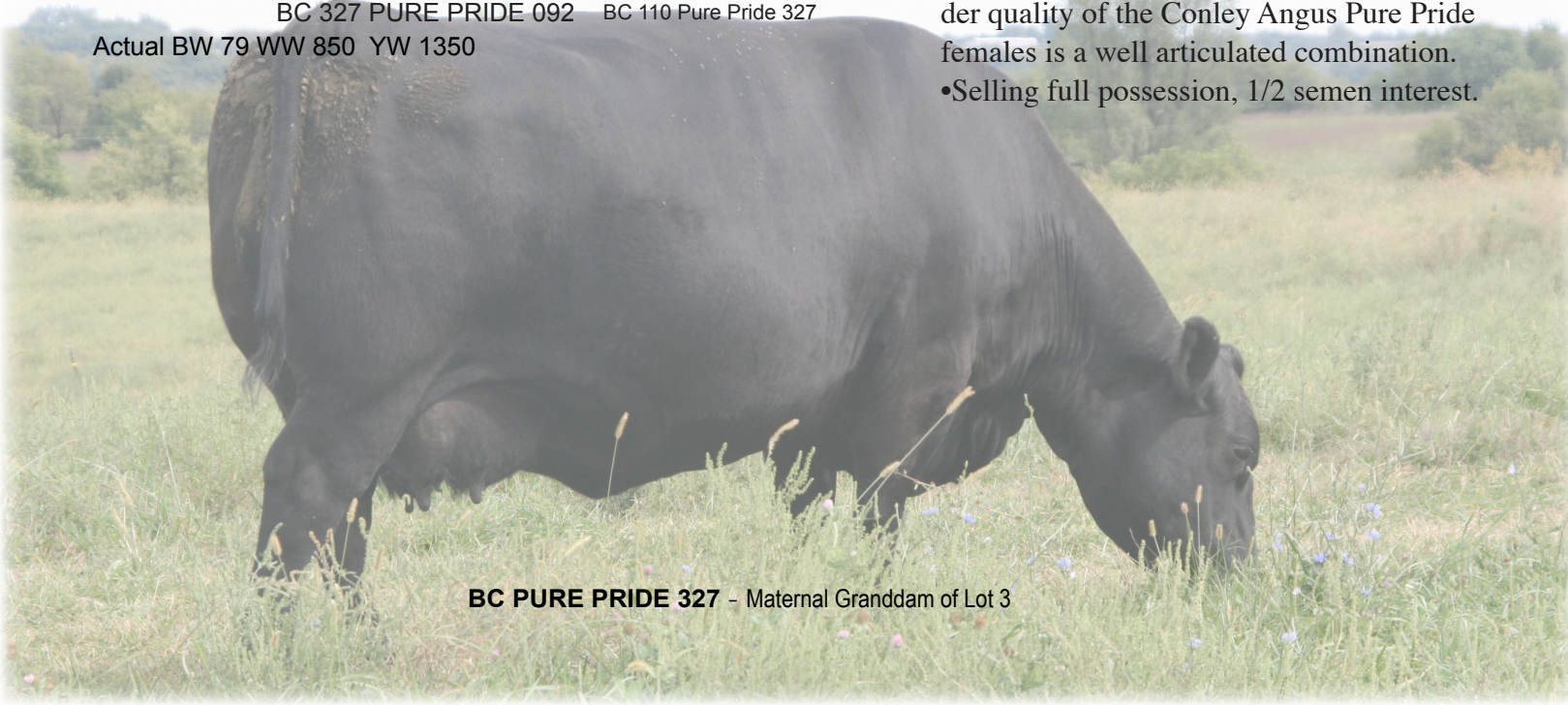
BC LOOKOUT 7024

BC 110 Pure Pride 327

•From day one this bull has been Bill and Trey's pick, undeniably one of the greatest bulls ever raised at Conley Angus.

•Blueprint's tremendous length of body, coupled with the maternal strength and udder quality of the Conley Angus Pure Pride females is a well articulated combination.

•Selling full possession, 1/2 semen interest.



BC PURE PRIDE 327 - Maternal Granddam of Lot 3



4

BC CERTAINLY ROBUST 977-2

#20642936

• 10-10-2022

BC ROBUST 0807

BC SURVEYOR 680D

BC 327-8 CP BELLE 0-807

BC CERTIFIED 413-1

BC 2413 PURE PRIDE 977

BC PURE PRIDE 2-413

Actual BW 74 WW 795 YW 1345

BC Eagle Eye 110-7

BC Prides Lass 4132-680

BC Pure Pride 327-8

BC 607 Belle 807

OCC PAXTON 730P

CAF PURE PRIDE EXT 99

BC CLASSIC 385-7

CAF PURE PRIDE EXT 99

• Certainly Robust simply puts all the pieces together, in one neat total package, calving ease, udder quality, fertility and performance.

• He is a wide based, strong topped bull that has the ideal front end design to make tremendously beautiful females, just like his mother.

• His dam BC Pure Pride 977 is a young domineering matriarch, combining elegance, body mass with exceptional fertility and production records.

• Selling full possession, 1/2 semen interest.

BC PURE PRIDE 977-Dam of Lot 4





5

BC NEW HEIGHTS 772-3

#20887249

• 03-14-2023

BC CERTIFIED 413-1

BC ALPHA C132

BC PURE PRIDE 1327

SAV SENSATION 5615

BC 0674 EDELLA 772

BC 3278 EDELLA 0674

OCC PAXTON 730P
CAF PURE PRIDE EXT 99
BC CLASSIC 385-7
BC 110 PURE PRIDE 327
SAV REGISTRY 2831
CAF PURE PRIDE EXT 99
BC PURE PRIDE 327-8
SINCLAIR EDELLA 6P189 4H3

Actual BW 79 WW 845 YW 1450

• New Heights is will take us to the next level, in terms of total body length, bone structure and strenght of top.

• Big boned, clean necked and stands on large ,well shaped feet.

• BC New Heights 772-3 has been a pleasure to watch as he has matured into a crowd favorite, as well as his mother, who excels in overall length of body, udder quality and fertility.

• The Edella cow 674 has made a lasting impact in our herd with tons of milk, all of her daughters have earned thier keep in the herd.

• New Heights balances powerful structure and style with proven preeminent maternal qualities.

•Selling full possession, 1/2 semen interest.



BC ALPHA c132

Sire of Lot 5

• Owned with Bar S Ranch, Paradise, Kansas.

•Alpha is a maternal brother to BC Logic 1327.

• BC Alpha sons, are phenomenal; good feet, tremendous body length, mass, smooth shouldered and clean headed.

• *Time Tested and Proven.*



6

BC CIPHER 903-3

#20642936

• 01-03-2023

BC ROBUST 0807

BC SURVEYOR 680D

BC 327-8 CP BELLE 0-807

BC CERTIFIED 413-1

BC 011T PURE PRIDE 903

TROWBRIDGE PURE 011 TROWBRIDGE PURE PRIDE 613

Actual BW 78 WW 806 YW 1365

BC Eagle Eye 110-7
BC Prides Lass 4132-680
BC Pure Pride 327-8
BC 607 Belle 807
OCC PAXTON 730P
CAF PURE PRIDE EXT 99
BC EAGLE EYE 110-7

- The dam of 903-3 is one of our young incredibly great BC Certified daughters in terms of her sleek front, long body and overall balanced trait profile.
- Definitely a brood cow maker, the granddam by Eagle Eye is one of the longest topped, high volume cows in the herd.
- Pure Pride 903 traces back to the full sister to BC Matrix 4132 that we shared with our life long friends -the Phil Trowbridge family in New York.

7

BC SCOTTY 152-3

#21184087

• 04-04-2023

BC ROBUST 0807

BC SURVEYOR 680D

BC 327-8 CP BELLE 0-807

BC CLASSIC 385-7

BC MISS CLASSIC E52 152

BC MISS EMULATION K23 MISS TRAVELER K 120

Actual BW 74 WW 795 YW 1345

BC Eagle Eye 110-7
BC Prides Lass 4132-680
BC Pure Pride 327-8
BC 607 Belle 807
BC CLASSIC 443 RT 2424
BC MIGNONN'E LIBBY 385
N BAR EMULATION EXT

- Is out one of our favorite BC Classic daughters, Bill purchased her dam as a 10 year old from K-State. She is a tremendously functional brood cow, you really have to appreciate her natural spring of rib and fluent mobility.
- He is the kind of bull that can be a real game changer in terms of his ability to transmit the feminine female qualities of EXT in a more Robust manner.



8

BC IVY LEAGUE 990-3

#20643791

• 03-14-2023

SITZ RESILIENT 10208

SITZ STELLER 726D

J TRADEMARK 1037

SITZ MISS BURGESS 1856

MILL BRAE IDEN GEORGINA 4086

KOUPALS B&B IDENTITY

BC ROBUST 0807

MILL BREA FA GEORGINA

BC 890 PURE PRIDE 990

BC SURVEYOR 860D

BC 690 PURE PRIDE 890

BC 3278 CP BELLE 0-807

BC MATRIX 4132

BC 304 PURE PRIDE 7024 690

Actual BW 75 WW 790 YW 1285



J TRADEMARK 1037

Sire of Lot 8

- In baseball, scouts look for 5 key players, this bull should be on everyone's short list on sale day.
- Phenotypically pleasing, stout made and out of a super heavy milking BC Robust 0807 daughter.
- He offers an outcross pedigree with calving ease, shape and extra growth coupled with tremendous maternal value.
- The magnitude of the Pure Pride cow family has a long history, deep influence and has been the key to success for decades.
- Much like his name reflects, this bull has high academic and social prestige coupled with long established maternal characteristics that set him in a league of his own.
- Selling full possession, 1/2 semen interest.



BC Pure Pride 890

Maternal Grandam of Lot 8



9

BC ROBUST 770-3

#20887248 • 02-25-2023

BC SURVEYOR 680D
BC ROBUST 0807
 BC 327-8 CP BELLE 0-807
 SAV SENSATION 5615
 BC 435 FOREVER LADY 770
 BC 1564 FOREVER LADY 435
 Actual BW 77 WW 735 YW 1245

BC Eagle Eye 110-7
 BC Prides Lass 4132-680
 BC Pure Pride 327-8
 BC 607 Belle 807
 SAV REGISTRY 2831
 SAV BLACKCAP MAY 4136
 BC PURE PROFIT 266-0
 BC 564 FOREVER LADY 1564

- BC 770 his dam and BC 772 (the dam of Lot 5) are peas in a pod, both possess the same ability to combine length of muscle with natural thickness throughout and carry themselves with elegance.



10

BC ROBUST 647-3

#20887243 • 02-27-2023

BC SURVEYOR 680D
BC ROBUST 0807
 BC 327-8 CP BELLE 0-807
 BC CERTIFIED 4131
 BC 0674 EDELLA 647
 BC 327-8 EDELLA 0-674
 Actual BW 76 WW 745 YW 1205

BC Eagle Eye 110-7
 BC Prides Lass 4132-680
 BC Pure Pride 327-8
 BC 607 Belle 807
 OCC PAXTON 730P
 CAF PURE PRIDE EXT 99
 BC PURE PROFIT 266-0
 BC 564 FOREVER LADY 1564

- His mother has been one of the many incredibly great BC Certified daughters in terms of her sleek front, long body and overall balance.
- Definitely a brood cow maker, his paternal granddam, BC Prides Lass 680 was one of the longest topped biggest ribbed, high volume cows ever in the herd.



11

BC ROBRO 920Z

#20642978 • 10-8-2022

BC SURVEYOR 680D
BC ROBUST 0808
 BC 327-8 CP BELLE 0-807
 BC MATRIX 4132
 BC 110 PURE PRIDE 920
 BC PURE PRIDE ERICA D 110
 Actual BW 75 WW 725 YW 1225

BC Eagle Eye 110-7
 BC Prides Lass 4132-680
 BC Pure Pride 327-8
 BC 607 Belle 807
 OCC EMBLAZON 854E
 CAF PURE PRIDE EXT 99
 OCC DOCTOT 940D
 CAF PURE PRIDE EXT 99

- Is a super high libido bull, out of a 16 year old Matrix daughter that gave us another bull this year.
- His maternal grandmother, BC Pure Pride 110 is the dam of BC Eagle Eye 110-7.
- BC 920, the dam of lot 11 simply has a strong passion for raising calves, all of her daughters have been retained in the herd, and will stay forever, especially BC Pure Pride 082, by BC Robust 0807.



12

BC GAME ON 1764-3

#21184088

• 04-17-2023

BC ROBUST 0807

BC SURVEYOR 680D

BC 327-8 CP BELLE 0-807

BC PURE PRIDE 327-8

BC MISS PURE PRIDE 1764

MID PERFORMISS 707T

BC Eagle Eye 110-7

BC Prides Lass 4132-680

BC Pure Pride 327-8

BC 607 Belle 807

BC LOOKOUT 7024

BC PURE PRIDE110 825J 327

BC MID EMBLAZON 854E 702

BLACK BUTTE ROYCEMAN 018

Actual BW 76 WW 705 YW 1265



Dam of BC Lookout 7024

- Game On is bred with A LOT of POWER, through the many time national champion female Mignonne 702.
- Study the natural shape and dimension he packs around with style, balance and power.
- Game On is the 6th of 7 bulls produced by BC Miss Pure Pride 1764. Her 3 daughters will remain in the herd forever. Cows that produce every year, and are able to do it with minimum input cost, are what keeps us in business... Game ON!
- Selling full possession, 1/2 semen interest.

- 702 is the dam of BC Lookout 7024, BC Mid Emblazon, (owned with Leo McDonnell), BC Maverick, BC Marathon and the dam of BC Classic 385-7.



13

BC ROBUST 713-3

#20887246

• 04-17-2023

BC ROBUST 0807

BC SURVEYOR 680D

BC 327-8 CP BELLE 0-807

BC CLASSIC 385-7

BC CLASSIC BEAUTY 1713

BC 520 BEAUTY'S MATRIX 713

BC Eagle Eye 110-7

BC Prides Lass 4132-680

BC Pure Pride 327-8

BC 607 Belle 807

BC CLASSIC 443 6807 RT 2424

BC MIGNONNE'S LIBBY 385

BC MATRIX 4132

BC 208 BEAUTY'S MARATHON 520

Actual BW 76 WW 705 YW 1265

Classic



• This bull continues to grow on me everyday, in terms of his balance, smoothness of muscle, depth of flank.

• Watch his video, he is as attractive on the move as he is standing.

• His grandmother has surfaced as one of the most prolific donor females, this BC Beauty family has a long history with the Conley family, and being out a "BC Classic" daughter, gives him even more reason to be a tremendous cow maker.

• Calving ease, with maternal greatness.

• Selling full possession, 1/2 semen interest.



14

BC ALPHA 864-3

#20887251

• 02-25-2023

BC CERTIFIED 413-1

OCC PAXTON 730P

BC ALPHA C132

CAF PURE PRIDE EXT 99

BC PURE PRIDE 1327

BC CLASSIC 385-7

JACKSON BIG CREEK 5072

BC 110 PURE PRIDE 327

BC 505 DIXIE ERICA 864

SAV RESORCE 1411

BC DIXIE ERICA 505

JA ELBA 1202

BC CERTIFIED 4131

BC DIXIE ERICA 605W 1-905

Actual BW 81 WW 780 YW 1250

• If you're looking for a cowmaking bull with a little extra wide rear end, take a double look at Lot 14's video.

• "1905" came in dam from the Lime-stone dispersal sale, she developed into a such a tremendously deep bod-ied powerhouse that Mike Marlow came and bought her back.

• I can't stress enough the maternal cow greatness this bull carries; both top and bottom sides of his pedigree are stacked deep. •Selling full posses-sion, 1/2 semen interest.

•Selling full possession, 1/2 semen interest.



OCC Dixie Erica 707W -Maternal Great Granddam of Lot 14



BC Dixie Erica 1-905
Maternal Granddam of Lot 14



15

BC ROBUST 243-3

#20887239

• 02-23-2023

BC SURVEYOR 680D
BC ROBUST 0807
 BC 327-8 CP BELLE 0-807
 BC CLASSIC 385-7
 BC CLASSIC BEAUTY 1713
 GREENWOOD BURGESS S678
 Actual BW 76 WW 705 YW 1265

BC Eagle Eye 110-7
 BC Prides Lass 4132-680
 BC Pure Pride 327-8
 BC 607 Belle 807
 BC CLASSIC 443 6807 RT 2424
 BC MIGNONNE'S LIBBY 385
 SAV 8180 TRAVELER 004
 PARTISOVER BURGESS 637

• Has an undeniable presence about him in terms of performance, topshape, pin width, forerib, and overall ruggedness. — Take a closer look and really analyze this bull.

• His mother is a very slender necked, smooth sided cow with the added maternal value of her maternal grandsire EXT.

• BC Classic 443 is a 6807 out of a Right Time back to the dam of EXT, making him double bred to “2424” on the bottom side, he traces back to “2424” 5 times in his pedigree.

• The cowman's kind!

16

BC TURN KEY 1890

#20887252

• 12-31-2021

BC SURVEYOR 680D
BC ROBUST 0807
 BC 327-8 CP BELLE 0-807
 BC WATCHMAN 425-9
 BC PURE PRIDE 1890
 BC 690 PURE PRIDE 890
 Actual BW 75 WW 675 YW 1160

BC Eagle Eye 110-7
 BC Prides Lass 4132-680
 BC Pure Pride 327-8
 BC 607 Belle 807
 BC EAGLE EYE 110-7
 BC 038 BEAUTY'S MR BEEF 425
 BC MATRIX 4132
 BC 304 PURE PRIDE 690

• BC Turn Key 1890 is a bull that could be one of the very best genetic value bulls in terms of the number of elite Conley Angus cows he tallies in his pedigree, combining all four (the Belle, Beauty, Pure Pride and Mignonne) plus the Prides Lass family.

• We have held on to Turn Key waiting for a place to use him, and beings we have pretty much used Robust exclusively for a number of years, this bull could be a real diamond from this special offering of bulls from the BC vault.

A Rich History of Angus- Family- Friends-

and volumes of success stories... Over the years our bulls have opened the doors to multiple lasting friendships, through-out the States and Canada.

— As a special feature, visitors will be able to view this incredible bull in person on sale day. BC Logic was selected by Mary Lee White of Burns, Oregon.

For the last 7 years, Logic has been breeding cows, in high dessert country, (where it is not uncommon for ranches to run 1 cow to 125 acres.) Mary Lee has spent her entire life raising high quality bulls that can meet customer demand. Her bulls have to be able to hold up in drought conditions and most of all have the feet and legs to travel miles. Over the years Logic continued to have the ability to safely breed heifers natural service as well as cover large groups of cows.

Semen only Lots- **B1, B2, B3, B4**

—Conley Angus bulls can contribute just the right amount of fleshing ability, maternal instinct and forage conversion to enhance your calf crop, improve cowherd stayability and get your cows bred on time for years.

— BC Alpha c132 was a member of our champion pen of bulls at the NWSS.

BC Alpha was a highlight in our 2017 bull sale offering.

- Alpha has spent his entire breeding career at Bar S Ranch, Paradise, Kansas.

- Alpha's influence at Bar S has been a true testament to the low input stratagy behind Conley Angus bulls and how the numeric values lineup consistantly for \$E, DMI, \$M and hoof quality.

BC Alpha c132 is a maternal brother to BC Logic 1327.

- Alpha is sired by BC Certified 4131.



BC LOGIC 1327
Reg. #19231190



BC PURE PRIDE 327



BC ALPHA c132
Reg. #18511676

A Rich History of Angus- Family- Friends- and volumes of success stories...



—Northcutt Noble 520-9, the sire of Lots 20, 25 and 26. “Noble” is a long topped, deep flanked, super sound, six year old BC Robust 0807 son that Lucas Northcutt raised out of his foundation BC Beauty 520 cow. It speaks volumes when you can raise an AI quality bull in your own herd and have multiple maternal sisters, and the 10 year old dam to bank embryos in the tank for future generations.

20

BC Noble 0493

#21183679 • 03-24-2023

NORTHCUTT NOBLE 520-9
BC 1713 BEAUTY 520

BC TABLE TOP 0177
BC 593 BARBARA 049
BC 2842 BARBARA 593

BC SURVEYOR 680D
BC 327-8 CP BELLE 0-807
BC CERTIFIED 413-1
BC CLASSIC BEAUTY 1-713
SAV SENSATION 5615
BC 327 PURE PRIDE 425-7 017
BC CERTIFIED 4131
BC PURE PRIDE BARBARA 2842

- A well balanced, sound functional bull, with extra rib and muscle shape.
- Bred to have exceptional weaning performance.
- Pedigree packed with bull power and maternal excellence.
- ACTUAL BW: 75 WW: 725

—I believe Lucas Northcutt was about 19 years old when he came up here and bought 10 BC Certified daughters to start his own registered Angus herd, and today, he still has the majority of the females in his growing herd. Off the top of my head, “520” -BC Beauty 520 has contributed multiple replacement females and an outstanding herds sire Northcutt Noble 520-9 — “Noble” is the sire of some of the great bulls in this offering. Actually, the first bull that Lucas bought from us was BC Clem B141, “Clem” has been a super easy calving sire that produces long-lasting production females. The last bull that Lucas purchased from us, BC 57G7, to be used on heifers and “57G7” has matured in to a powerfull AI sire that Bill and I used and have sons that we retained for our own use.

—The Northcutt family is no stranger to the cattle industry; Lucas’s grandfather Don, raised hundreds of cattle back in the 70’s. It has been exciting to see such an ambitious young man as Lucas D. Northcutt build a solid, functional Angus herd of his own!



BC Clem B141



Lucas and Jessica Northcutt

- A very attractive fronted, long topped bull with a lot of natural rib shape, depth of flank.
- Calving ease, and performance with eye-appeal.
- Everything in this bull's pedigree spells maternal excellence, calving ease and longevity.
- The sire of Lot 21, BC 57G7 is a bull that we sent to Lucas to breed heifers to, and with great success 57G7 not only made a great heifer bull but he has matured into a massive smooth bodied bull with a ton of extra rib and is very athletic on the move.

ACTUAL BW: 73 WW: 605



LOT 21 - BC 57G7 4193

21 **BC 57G7 4193** **#21183683 • 09-21-2023**

BC LOOKOUT B771	BC LOOKOUT 7024
BC 57G7	BC 825J BR MIGNONNE 0-771
BC A674G BLACKBIRD 57G	BC CERTIFIED 413-1
BC CLASSIC 385-7	BC BLACKBIRD MATRIX 2-674G
BC 630 TILDA 419	BC CLASSIC 443 6807 RT 2424
BC 440 TILDA'S MATRIX 630	BC MIGNONNE'S LIBBY 385
	BC MATRIX 4132
	BC 011 TILDA'S MR BEEF 440

22 **BC Black Knight 111-3** **#21183687 • 04-26-2023**

BC CLEM B141	BC PURE PRIDE 327C
NORTHCUTT HAY GRINDER 7040	BC CLASSIC PURE PRIDE 99 141
LIMESTONE PURE PRIDE T148	OCC EMLAZON 854E
BC ROBUST 0807	CAF PURE PRIDE EXT 99
NORTHCUTT 520 BEAUTY 111	BC SURVEYOR 680D
BC 1713 BEAUTY 520	BC 327-8 CP BELLE 0-807
	BC CERTIFIED 4131
	BC 520 CLASSIC BEAUTY 1713

- Is sired by a son of the calving ease sire, BC Clem B141.

- His mother sired by BC ROBUT 0807 is a full sister to Northcutt Nobel 520-9, out of the prolific ET donor female BC Beauty 520.

- The paternal grandmother to this bull is a full sister to BC Matrix 4132.

- This bull is super attractive fronted, with nice balance of structure.

ACTUAL BW: 71 WW: 580



LOT 22 - BC BLACK KNIGHT 111-3



LOT 23 - BC 57G7 537-3

- Backed by three generations of calving ease sires, (BC 57G7, BC-Clem and BC Pure Profit) all started out as heifer bulls and then graduated to outstanding herd bulls!

- A moderately designed, square hipped big ribbed bull with natural width and dimension.

- Take a closer look at this bull in person, he has the extra rib capacity, depth of flank, and total body mass of his sire BC 57G7.

23

BC 57G7 537-3

#21183681 • 09-13-2023

BC Lookout B771	BC Lookout 7024
BC 57G7	BC 825J BR Mignonne 0-771
BC A674G Blackbird 57G	BC Classic 443 6807 RT 2424
BC Clem B141	BC Blackbird Matrix 2-674G
LDN Pure Lass 537F	BC Pure Pride 327-8
BC 2117 Lass 537	BC Classic Pure Pride 99 141
	BC Pure Profit 266-0
	BC One Better Lass 2-117

EPD'S: CED +7 BW +.9 WW +49 YW +84 MILK +20

ACTUAL BW: 74 WW: 615

24

BC FORAGER 118-3

#21183688 • 04-23-2023

BC Clem B141	BC Pure Pride 327c
Northcutt Hay Grinder 7040	BC Classic Pure Pride 99 141
Limestone Pure Pride T148	OCC Emlazon 854E
BC Robust 0807	CAF Pure Pride Ext 99
Northcutt 488C Blackbird 118	BC Surveyor 680D
LDN Carly 488C	BC 327-8 CP Belle 0-807
	Duff New Edition 6108
	Robbins Blackbird 4088

Actual BW: 75 WW: 645



LOT 24 - BC Forager 118-3

- Sired by the calving ease son BC Clem B141.

- Out of a BC Robust daughter.

- This is a long ribbed bull with a tick more frame.



LOT 25 - BC Noble 44C-3

25 BC Noble 44C-3

#21183680 • 03-19-2023

BC Robust 0807

Northcutt Noble 520-9

BC 1713 Beauty 520

Duff New Edition 6108

LDN Caroline 44C

BAX Hope Melina 44-332

BC Surveyor 680D

BC 327-8 CP Belle 0-807

BC Certified 413-1

BC Classic Beauty 1-713

OCC Genesis 872G

OCC Dixie Erica 814G

OCC Homer 650H

BAX Melina Emma 322-199

EPD'S: CED +5 BW +1.9 WW +51 YW +82 MILK +15

ACTUAL BW: 75 WW: 655

- Is a well balanced, long, smooth bull that is bred to sire tremendous females. His mother is a 2016 model female that has consistently produced outstanding calves and she is one of Lucas's ET donor females.

26 BC Noble 3-537

#21183682 • 03-22-2023

BC Robust 0807

Northcutt Noble 520-9

BC 1713 Beauty 520

BC Clem B141

NBCC Hayley 537H

BC 027 Prure Pride 527

BC Surveyor 680D

BC 327-8 CP Belle 0-807

BC Certified 413-1

BC Classic Beauty 1-713

BC Pure Pride 327c

BC Classic Pure Pride 99 141

BC Pure Profit 266-0

BC One Better Lass 2-117

EPD'S: CED +7 BW +1.1 WW +56 YW +90 MILK +15

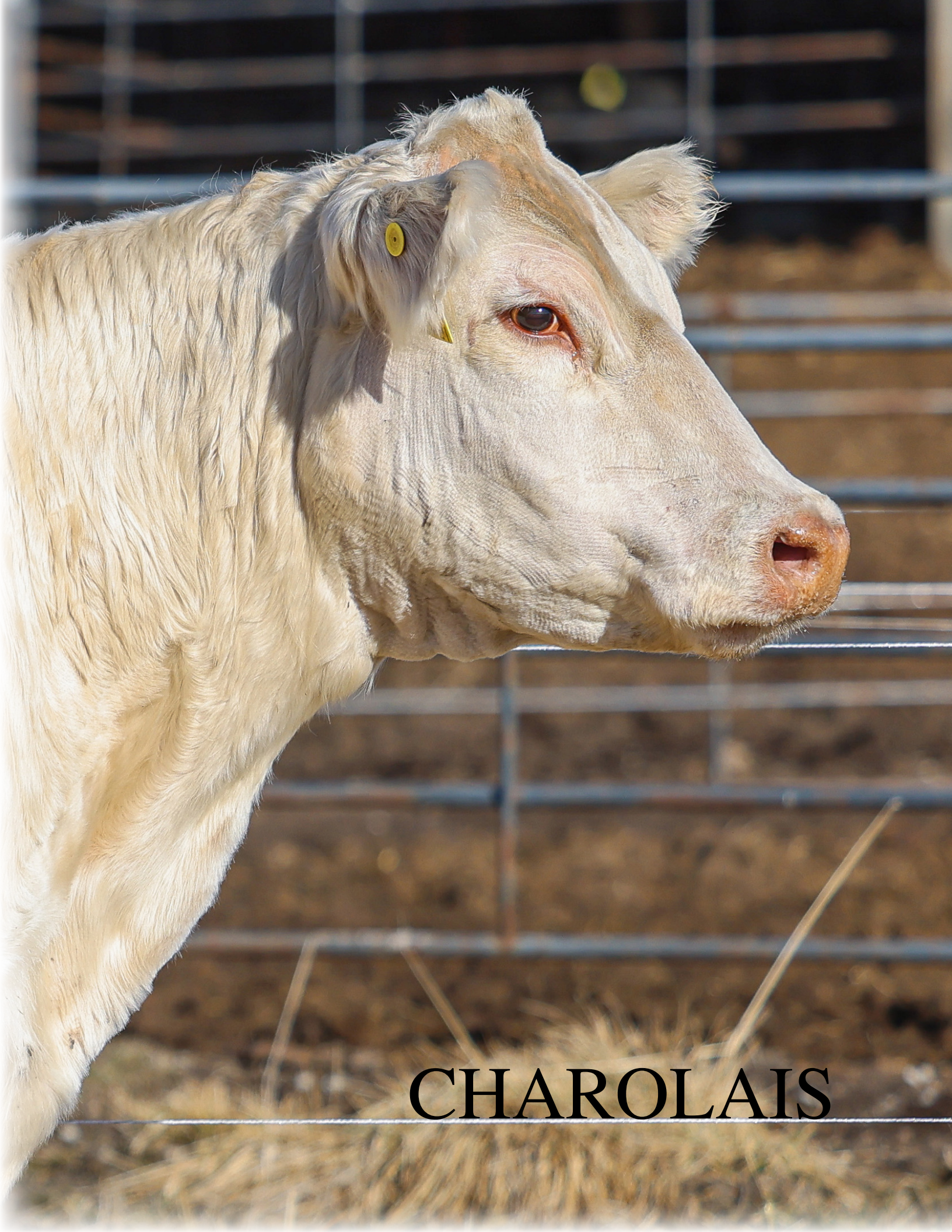
ACTUAL BW: 75 WW: 635

- Is out of another top end BC Clem daughter that has made it to the donor pen.
- He will be one of those bulls that you can use on heifers and keep for years breeding cows.



—Conley Angus bulls can contribute just the right amount of fleshing ability, maternal instinct and forage conversion to enhance your calf crop, improve cowherd stayability and get your cows bred on time for years.





CHAROLAIS



30

CCC MS EASY 1050 P ET

#F1317260 • 01-14-2021

WC MILESTONE 5223 P

CCC MESCALITO 9038 P

WC CCC SWEETHEART 6166 P ET

M6 SLEEP EASY 734 PLD

M&M MS SLEEP EASY 4518 PLD

M&M MS WIND STORM 2030 PLD

- Stands alone as one of our favorite females in this offering. She is truly a cornerstone breeding piece that can add to any operation.
- Weaned an outstanding Probitry heifer calf in the fall of 2024.
- Sells with fantastic bull calf by BC Blueprint 592-3 (Angus) born on 3-21-25, birth weight 77#.

—Femininity

31

CCC MS BESS 1046

#F1309839 • 01-12-2021

LT RUSHMORE 8060 PLD

CCC WC RESOURCE 417 P

WC CCC BLUE GIRL 1528 P

WC BENELLI2134 P ET

CCC MS BESS 609 PLD

CCC WINDY BESS 01 PLS ET

- Big framed, ultra feminine, long bodied, sleek fronted, female with a beautiful udder.
- As a first calf heifer she weaned an out- standing heifer calf by Probitry, She had an Affinity heifer calf January 21, 2025.
- 1046 is donor quality in terms of udder structure and an abundance of milk.
- Sells open, ready to flush.



- Power cow, tremendous body mass, heavy muscled and extremely sound from the ground up.
- "Fluffy" was the first Charolais that caught Bill's eye and she has been a great producer, as well as a large pet.
- Sells open, ready to flush.
- Sell with January 6, 2025 bull calf at side by Affinity.

32 KASS/CJB Lady Jet 422

#F1186887 • 04-17-2014

TR MR FIRE WATER 579RET

TR PZC MR TURTON 0794ET

THOMAS MS IMPRESSIVE0641

KASS JAXSONWT 38 ET

KASS/CJB JOAN JET ET

LC MS WIND 5033 PET

33 CONLEY LADY JET 01C

#F1292167 • 03-18-2020

LT -WC TEMPELTON 1483 PLD ET

WC CCC MAVERICK 5117 P ET

THOMAS MS IMPRESSIVE0641

TR PZC MR TURTON 0794ET

KASS/CJB LADY JET 422

KASS/CBJ JOAN JET ET



- Just like her mother, (Lot 32) massive volume, yet lady like in her features.
- Was successfully shown, as a many time champion, for Cinch Dowling.
 - Sells open, ready to flush.



- I was very impressed with her performance as a first calf heifer!
- A beautiful cow calf pair.
- Her daughter sells as Lot 34A.
- Sells open, ready to flush

34 **CONLEY ATHENA 154C**
#F1312120 • 04-07-2021

CCC MESCALITO 9038 P WC MILSTONE 5223 P
WC CCC SWEETHEART 6166 P ET
WC ATHENA 5517P LT -WC Tempelton 1483 PLD ET
WC Athena 2542

34A **CONLEY ATHENA C41**
#pending • 06-20-2024

AFFINITY
CONLEY ATHENA 154C
• birth weight 72 lbs.



- "Tempelton" has been a workhorse, always breeds first AI service and raises a strong healthy calf.
- Her daughter sells as Lot 34.
- Sells open, with January 5, 2025 bull calf at side by Affinity.

35 **WC ATHENA 5517**
#F1216352 • 09-09-2015

TR MR FIRE WATER 579RET
LT-WC TEMPELTON 1483 PLD ET
THOMAS MS IMPRESSIVE0641
WC ATHENA 2542 P LT BLUE VALUE 7903 ET
LT ATHENA 9156 POLLED

*A Rich History of Angus- Family- Friends-
and volumes of success stories...*

RED ANGUS





40

LE 2300

#4736614 • 01-23-2022

DUFF RED BLOOD 18114 ROJAS RIOJA 6052
DUFF JUANADA 927K 15124
LE RUBY 0308 WC RED DETOUR 2123Z
HKL RUBY

—Balanced traits

- A POWERFUL young, easy fleshing, well built daughter of Duff Red Blood.
- Combines the look and power that we all love.
- 2300's dam seems to click with every bull she has been bred to.
- Sells with bull calf by LE 3309 (Red Box son); born 3-30-25 birth weight 80#.

—Performance



—Udder Quality

41

LE 2305

#4736624 • 02-17-2022

DUFF RED BLOOD 18114 ROJAS RIOJA 6052
DUFF JUANADA 927K 15124
LE MISS BIRDIE 7503 RES MOOSECREEK WESTON 23B
WCR MISS BIRDIE RR 41798

- Is a percentage red/Simmental
- comes from a long line of fertility and production.
- Sells with bull calf by LE 3309 (Red Box son); born 3-24-25 birth weight 71#.

—Femininity



Lot 43 - A1R Larkaba 6506 0209

42 **LE 3202**
Lot 42
 #4183460 • 01-23-2023

CALVO EASY RED 126C

LE1203

OCC EASY RED
 BUF CREEK AMY W086
 RED TOWAW ORAZI CALIDAD 130Y
 BUF CRK NELL ZO65

- As a first calf heifer this is what everyone's goal is in breeding cattle, calved unassisted, has a great udder with an abundance of milk, and stands on perfect feet.
- Sells with a February 10, 2015 heifer calf by Red Wood that weighed 14 lbs at birth.

Out of SALE

43 **AIR LARKABA 6506 0209**
 #4402647 • 02-11-2020

CALVO EASY RED 126C

AIR LARKABA 6506

OCC EASY RED
 BUF CREEK AMY W086
 VGW ENHANCER 378
 TLS LARKABA Z253

- An etreamely long hiped, feminine cow, with balanced traits, in an ultra neat package.
- A very productive cow with plenty of milk.
- Had a set of twins on 2/23/25, lost the bull calf, will sell with free-martin heifer calf at side.

44 **AR KATYA 4124 8711**
 #3936081 • 03-04-2018

CALVO EASY RED 126C

BRUNS KATYA 5399-4124

OCC EASY RED
 BUF CREEK AMY W086
 PCC JOHNNY COME LATLEY 4090X
 5L KATYA 2647-5399

- Moderate, big ribbed, easy fleshing cow.
- Sells with bull calf by LCA Stone 813, born 3-9-25 birth weight 74#.



Lot 44 - AR KATYA 4124 8711

—Cowherd stayability



45

LE 2200

#4736644 • 01-03-2022

ROJAS RIOJA 6052

DUFF RED BLOOD 18114

DUFF JUANADA 927K 15124

CALVO EASY RED 126C

A1R NELL Z065 0205

BUF CRK NELL Z065

—Udder Quality

- A super functional Red Blood daughter. The Red Blood/Easy Red cross has left a lot of nice uddered females that will flat raise a calf.
- Her dam sells as Lot 46.
- Will calve by sale day to LCA Stone 813

—Maternal instinct

46

A1R NELL Z065 0205

#4402643 • 02-01-2020

OCC EASY RED

CALVO EASY RED 126C

BUF CREEK AMY W086

BUF CRK BLACK MAGIC X004

BUF CREEK NELL Z065

BUF CREEK NELL X210

- A very productive female with a little more frame.
- Take a look at her daughter, Lot 45
- 0205 has perfect feet and very functional udder.
- Will calve by sale day to LCA Stone 813, Kargo son from Darren Schrag.



—Perfect feet

Reflecting on a lost loved one is often accompanied by a mix of emotions. As you try to make sense of their absence and the impact they had on your life, while acknowledging the pain of their loss; it's a process of both grieving and honoring their legacy...



William J. "Bill" Conley
November 6, 1955 - September 4, 2024

Bill's passion in life was raising Angus cattle and sharing his love of showing and judging cattle with his family, Kyle Conley, (Case and Jack), Kori (Conley) Simmons (Cole, Sterling and Sutton), and Trey Conley.



5119 Hwy 6
Clarksdale, MO 64430

CONLEY ANGUS SPECIAL BULL SALE

**FRIDAY, APRIL 4, 2025
1:00 PM CST CLARKSDALE, MO**